

Model: Model-J CF		Date: 4-Mar-02	No.: RG570001
Subject: Language Software History		Prepared by: H. Someya	
From: Technical Services Dept., GTS Division			
Classification:	<input type="checkbox"/> Troubleshooting	<input type="checkbox"/> Part information	<input type="checkbox"/> Action required
	<input type="checkbox"/> Mechanical	<input type="checkbox"/> Electrical	<input type="checkbox"/> Service manual revision
	<input type="checkbox"/> Paper path	<input type="checkbox"/> Transmit/receive	<input type="checkbox"/> Retrofit information
	<input checked="" type="checkbox"/> Other ()		

Language software history for the Model-J CF.

Version	Program No.	Check Sum	Effective Date
2.34	G5705430A	7EBF	1st mass production

Version	Symptom Corrected	Affected Language
2.34	1st mass production	

Using the Language Kit.

Caution:

1. Turn off the main switch whenever inserting or removing an IC card.
2. Open the front cover whenever updating the firmware.
3. Do not turn off the machine while downloading the firmware.

1. Insert the IC card containing the firmware into the controller IC card slot.
2. Turn ON the main power. Then, chose either the First or Second display language for the update.

Note: It is also possible to write to both the First and Second languages.

3. Start the update.
4. Select the appropriate display language with the User Tools.

Model: Model-J CF	Date: 4-Mar-02	No.: RG570001
-------------------	----------------	---------------

Possible Display Languages for Operation Panel Software

✓: Can be displayed.

Op. Panel Software: Display Language:	G5705426 (NA.)	G5705427 (EU)
Japanese	✓	✓
English-NA	✓	✓
English-UK	✓	✓
French	✓	✓
German	✓	✓
Italian	✓	✓
Spanish	✓	✓
Dutch	✓	✓
Norwegian	✓	✓
Danish	✓	✓
Swedish	✓	✓
Polish	✓	✓
Portuguese	✓	✓
Hungarian	✓	✓
Czech	✓	✓
Finnish	✓	✓

Model: Model-J CF		Date: 15-Mar-02	No.: RG570002
Subject: Remarks at firmware update		Prepared by: T. Itoh	
From: Technical Services Dept., GTS Division			
Classification:	<input type="checkbox"/> Troubleshooting	<input type="checkbox"/> Part information	<input checked="" type="checkbox"/> Action required
	<input type="checkbox"/> Mechanical	<input type="checkbox"/> Electrical	<input type="checkbox"/> Service manual revision
	<input type="checkbox"/> Paper path	<input type="checkbox"/> Transmit/receive	<input type="checkbox"/> Retrofit information
	<input type="checkbox"/> Other ()		

The system firmware has been modified to Ver. 1.07, and the engine main firmware has been modified accordingly. As shown below, the specification for meter click counting in SP mode has been changed.

As shown in the third table below, SC999 will occur at machine power up when updating the system firmware to V1.07 or newer with engine main firmware V1.15E or older already installed. See Note 2 below.

Specification Change

Previous Specification	New Specification
Copies made in SP mode are counted up.	Copies made in SP mode are <u>not</u> counted up. NOTE: A grid pattern is imposed on copy images made in SP mode.

Firmware Combination Results

Type of firmware	Combination 1	Combination 2	Combination 3	Combination 4
System	1.05 or older		1.07 or later	
Engine Main	1.15E or older	1.17C or later	1.15E or older	1.17C or later
Result	Current Spec.	Current Spec.	SC999	New Spec.

Remarks for Firmware Update or CF Installation

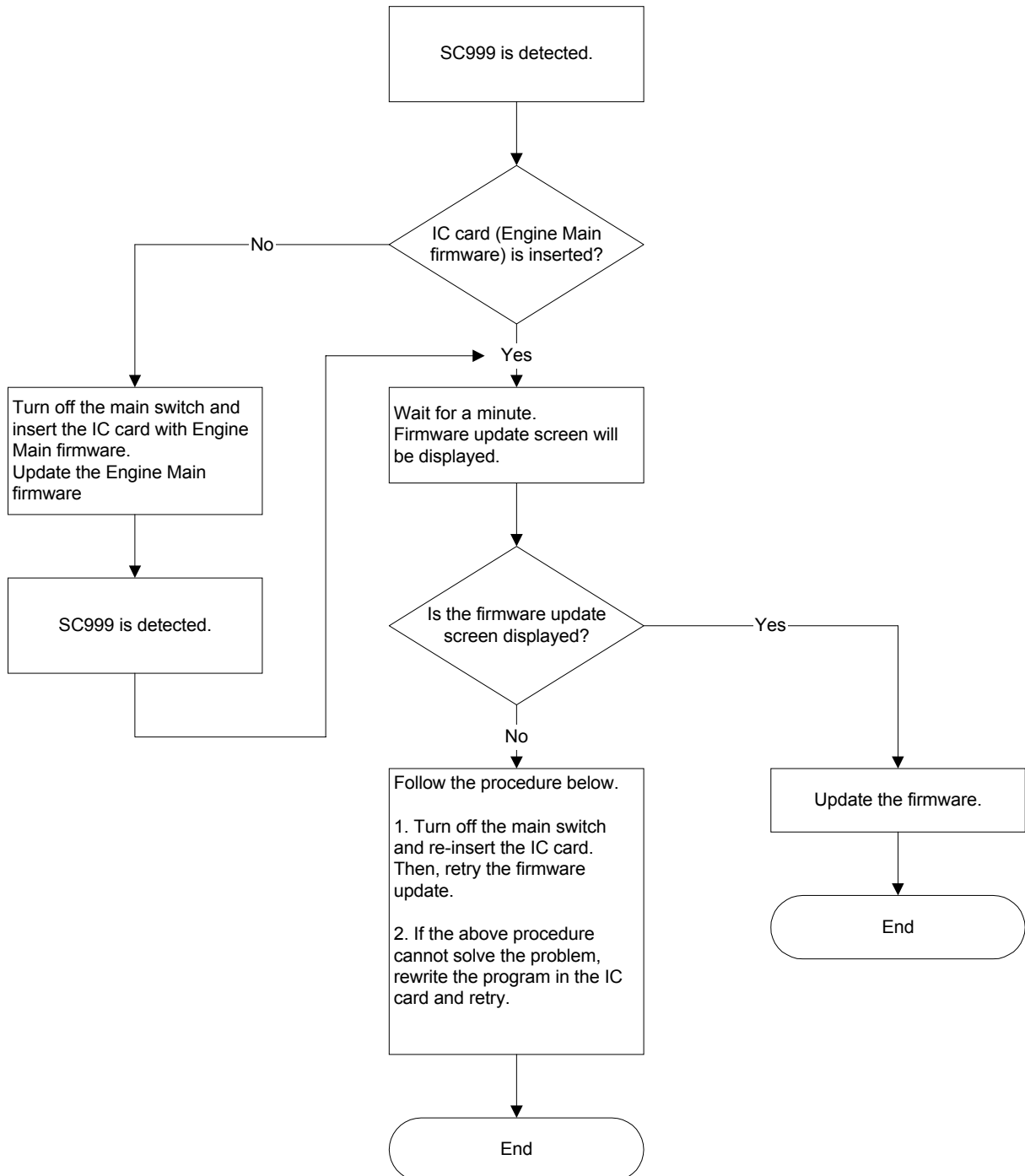
Type of firmware	Firmware Version					
	1.02		1.05		1.07	
System	1.02		1.05		1.07	
Engine Main	1.15E or older	1.17C or later	1.15E or older	1.17C or later	1.15E or older	1.17C or later
SC999	-	-	-	-	Detected	-

NOTE 1: Whenever updating the firmware, please open the front cover before turning of the main switch.

NOTE 2: To prevent SC999 occurring at power up, whenever updating the system firmware to V1.07 or newer, make sure to install engine main firmware 1.17C or newer first.

NOTE 3: When installing the mainframe together with a CF expander unit from March '02 production or later, first check the engine firmware version and update it to V1.17C or newer if necessary. This will prevent SC999 from being detected.

If for some reason NOTES 2 and 3 above are not followed, and SC999 occurs at power up when trying to update the system firmware to V1.07, please use the following flowchart to clear the condition.



Model: Model-J CF		Date: 15-Mar-02	No.: RG570003
Subject: Firmware Modification		Prepared by: H. Someya	
From: Technical Services Dept., GTS Division			
Classification:	<input type="checkbox"/> Troubleshooting	<input checked="" type="checkbox"/> Part information	<input type="checkbox"/> Action required
	<input type="checkbox"/> Mechanical	<input type="checkbox"/> Electrical	<input type="checkbox"/> Service manual revision
	<input type="checkbox"/> Paper path	<input type="checkbox"/> Transmit/receive	<input type="checkbox"/> Retrofit information
	<input type="checkbox"/> Other ()		

This bulletin explains the firmware modification history for the Model-J CF (details begin on page 2).

	Controller DIMM1	Controller DIMM 2		IPU	Operation Panel
Firmware Type	System, Copier Application Netfile Application	Printer Application	Scanner Application	Scanner IPU	LCDC
Remarks					

RTB Revision List

Issue Date	Control Symbol	Revised contents
14-Mar-02	-	First edition

Model: Model-J CF	Date: 15-Mar-02	No.: RG570003
-------------------	-----------------	---------------

Modification History

1. System, Copy Application, Netfile Application Firmware

P/N	System Version	Check Sum	Contents of Modification	Cut-in Month
G5705388B	1.02	-	Firmware installed from the first mass production run.	December, 2001
G5705388C	1.05	-	<ul style="list-style-type: none"> • Letterhead Mode has been added (see RTB #RG060006 for details). • Date and time display format for Asia has been changed to that of Europe. • SP7-904 [Print: Printer Gamma] has been deleted. • SP7-807 [SC Jam Counter Clear] has been added. • The following has been fixed: <ul style="list-style-type: none"> ※ The staple LED on the operation panel does not light at staple end condition. 	January, 2002
G5706688	1.07	0CC4	<ul style="list-style-type: none"> • The meter click counter specification has been changed so that copies made in SP mode are not counted up. With this modification, SC999 is detected when updating the engine main firmware from ver1.15E or older to 1.07 or later (see RTB #RG570002 for details). • A grid pattern has been added to SP mode copy images. To activate this, it is necessary to use system firmware ver1.07 or newer. • Specification changed so that the red LED for the printer application key top lights up when an alert condition is detected (e.g. fusing/oil supply unit near end). Just as with the G060 printer, the LED lighting conditions depend on the setting of SP5-930-3. • RMS is supported with the use of the customized controller (field monitoring machines only). • The following have been fixed: <ul style="list-style-type: none"> ※ The Punch Counter counts up by 2 for every sheet punched when using the function in Duplex Mode. ※ Executing system settings reset does not clear the password settings for stored documents or change the setting for Auto-off (energy saver 2) back to default. ※ Printed sheets are fed out to shift tray 2 of the finisher in punch/staple mode. ※ Centering problem when printing onto 12" x 18" paper. 	March, 2002

Model: Model-J CF	Date: 15-Mar-02	No.: RG570003
-------------------	-----------------	---------------

2. Printer Application Firmware

P/N	Version	Check Sum	Contents of Modification	Cut-in Month
G5705391B	1.02	-	Firmware installed from the first mass production run.	December, 2001
G5705391C	1.05	-	<ul style="list-style-type: none"> The following has been fixed: Paper is not punched at the designated position in Series Print mode (see RTB RGene010 for details on Series Print mode). 	January, 2002
G5705391D	1.06	-	<ul style="list-style-type: none"> The following has been fixed: While downloading PS fonts to a machine with the HDD option installed, the correct PS serial number cannot be output. 	February, 2002
G5705391E	1.07	2EB8	<ul style="list-style-type: none"> Euro fonts PC858, ISO8859-15, L9, PS Math and MC Text are now supported. PS performance improvement. The followings have been fixed: <ul style="list-style-type: none"> ※ When the undefined command, "<ESC>&k#w", is received, it appears on the output as a character string [e.g. as "<ESC>&k6w"]. ※ If Job Reset is selected while the first page of a multiple-page document is being processed, the panel continues to display "Printing". ※ AutoContinue timer bug. 	March, 2002

3. Scanner Application Firmware

P/N	Version	Check Sum	Contents of Modification	Cut-in Month
G5705386A	1.00	-	Firmware installed from the first mass production run.	December, 2001
G5705386B	1.03	DCB6	<ul style="list-style-type: none"> The following has been fixed: <ul style="list-style-type: none"> ※ PP mode software bug 	January, 2002

Model: Model-J CF	Date: 15-Mar-02	No.: RG570003
-------------------	-----------------	---------------

4. Scanner IPU Firmware

P/N	Version	Check Sum	Contents of Modification	Cut-in Month
G5705350H	1.10	-	Firmware installed from the first mass production run.	December, 2001
G5705350J	1.12	507A	<ul style="list-style-type: none"> • Scanner software modified to effectively minimize variations in SBU board scanner controller output. • The following has been fixed: <ul style="list-style-type: none"> ※ A color misalignment appears when the full-page cover sheet and combine functions are selected. 	February, 2002

5. LCDC Firmware

For NA/Asia version

P/N	Version	Check Sum	Contents of Modification	Cut-in Month
G5705426	2.10	2DFD	Firmware installed from the first mass production run.	December, 2001

For EU version

P/N	Version	Check Sum	Contents of Modification	Cut-in Month
G5705427	2.10	D529	Firmware installed from the first mass production run.	December, 2001

Reissued: 18-Jul-02

Model: Model-J CF	Date: 4-Mar-02	No.: RG570001a
-------------------	----------------	----------------

RTB Reissue

Subject: Language Software History		Prepared by: H. Someya	
From: Technical Services sec. Service Planning Dept.			
Classification:	<input type="checkbox"/> Troubleshooting	<input type="checkbox"/> Part information	<input type="checkbox"/> Action required
	<input type="checkbox"/> Mechanical	<input type="checkbox"/> Electrical	<input type="checkbox"/> Service manual revision
	<input type="checkbox"/> Paper path	<input type="checkbox"/> Transmit/receive	<input type="checkbox"/> Retrofit information
	<input checked="" type="checkbox"/> Other ()		

Language software history for the Model-J CF.

Version	Program No.	Check Sum	Effective Date
2.36	G5705430B	C8DB	May production '02
2.34	G5705430A	7EBF	1st mass production

Version	Symptom Corrected	Affected Language
2.36	“Sub TX Mode” in Fax Mode was translated as “Sub RX Mode”.	German Spanish Swedish
	The translations for “Rotate Sort” in Copier mode were displayed in German.	Dutch
	The translations for “Hide” and “Display” in Paper Display Settings were reversed.	German
	The translations for “Polling TX” and “Polling RX” in Fax mode were reversed.	Finish
	The word “[Exit]” in the error message for no corresponding paper in Fax mode was displayed in English.	German Czech
	The translation for the word “[Exit]” in some messages was different from the name of the [Exit] key.	Czech
	The translation for “Print Counter” in Key Operator Tools was incorrect.	German
	The translations for “Transmission Mode” and “Sub TX Mode” in Fax mode were incorrect.	Finish
	The paper orientation icon does not appear in some error messages.	Danish
	Parts of some error messages for Destination Management in Fax mode were translated incorrectly.	Dutch
	The translation for “Service Call” in Fax mode error messages was incorrect.	Czech
2.36	The paper size icon was displayed in the wrong orientation in the system alert display.	Swedish
2.34	1st mass production	

Reissued: 18-Jul-02

Model: Model-J CF

Date: 4-Mar-02

No.: RG570001a

Using the Language Kit.**Caution:**

1. Turn off the main switch whenever inserting or removing an IC card.
2. Open the front cover whenever updating the firmware.
3. Do not turn off the machine while downloading the firmware.

1. Insert the IC card containing the firmware into the controller IC card slot.
2. Turn ON the main power. Then, chose either the First or Second display language for the update.
Note: It is also possible to write to both the First and Second languages.
3. Start the update.
4. Select the appropriate display language in User Tools.

Possible Display Languages for Operation Panel Software

✓: Can be displayed.

Op. Panel Software: Display Language:	G5705426 (NA.)	G5705427 (EU)
Japanese	✓	✓
English-NA	✓	✓
English-UK	✓	✓
French	✓	✓
German	✓	✓
Italian	✓	✓
Spanish	✓	✓
Dutch	✓	✓
Norwegian	✓	✓
Danish	✓	✓
Swedish	✓	✓
Polish	✓	✓
Portuguese	✓	✓
Hungarian	✓	✓
Czech	✓	✓
Finnish	✓	✓

Reissued: 19-Jul-02

Model: Model-J CF	Date: 15-Mar-02	No.: RG570003a
-------------------	-----------------	----------------

RTB Reissue

Subject: Firmware Modification		Prepared by: H. Someya	
From: Technical Services sec. Service Planning Dept.			
Classification:	<input type="checkbox"/> Troubleshooting	<input checked="" type="checkbox"/> Part information	<input type="checkbox"/> Action required
	<input type="checkbox"/> Mechanical	<input type="checkbox"/> Electrical	<input type="checkbox"/> Service manual revision
	<input type="checkbox"/> Paper path	<input type="checkbox"/> Transmit/receive	<input type="checkbox"/> Retrofit information
	<input type="checkbox"/> Other ()		

Firmware modification history for the Model-J CF (details begin on page 2).

	Controller DIMM1	Controller DIMM 2		IPU	Operation Panel
Firmware Type	System, Copier Application, Netfile Application	Printer Application	Scanner Application	Scanner IPU	LCDC
Remarks					

RTB Revision List

Issue Date	Control Symbol	Revised contents
14-Mar-02	-	First edition
19-Jul-02	<<A>>	System: 1.07 → 1.08 Printer Application: 1.07 → 1.08 LCDC: 2.10 → 2.12

Model: Model-J CF	Date: 15-Mar-02	No.: RG570003
-------------------	-----------------	---------------

Modification History

1. System, Copy Application, Netfile Application Firmware

P/N	System Version	Check Sum	Contents of Modification	Cut-in Month
G5706688A	1.08	0E02	<ul style="list-style-type: none"> • The following have been fixed: <ul style="list-style-type: none"> ※ When scanning originals in color mode, the machine freezes if the HDD is in the near-full condition and the scanned data is saved in JPEG format. ※ "8 1/4 x 14 SEF" is displayed when the machine detects 8 1/2 x 14 SEF. 	May, 2002

2. Printer Application Firmware

P/N	Version	Check Sum	Contents of Modification	Cut-in Month
G5705391F	1.08	972E	<ul style="list-style-type: none"> • The following have been fixed: <ul style="list-style-type: none"> ※ The panel indicates an Offline status when recovering from Energy Saver mode. ※ The software allows a password of less than 4 characters to be set for Locked Printing. ※ The panel freezes when the following is performed: <ol style="list-style-type: none"> 1. Several tabs are accessed in User Tools – Printer Features. 2. Bypass Paper Size is selected in the Paper Input tab and a custom paper size is set. ※ The panel freezes when a punch error occurs in Series Print mode. ※ Certain characters do not print (GFPR #RC02010008). • Change in Specifications: <ul style="list-style-type: none"> ※ The icon for Letterhead with duplex on the initial display for Copier mode has been changed to match that of the other paper icons. ※ PCL <ul style="list-style-type: none"> - Modified so that all characters in symbol sets MS Text and Windows Baltic (19L) print out the same as with HP. - When the HDD option is not installed, the PCL HDD Directory List and Font Source sections will not appear on the PCL Configuration Page. ※ PS <ul style="list-style-type: none"> - The black dither will not be used with the DeviceGray command. 	May, 2002

Model: Model-J CF	Date: 15-Mar-02	No.: RG570003
-------------------	-----------------	---------------

3. Scanner Application Firmware

No new modifications

4. Scanner IPU Firmware

No new modifications

5. LCDC Firmware

For NA/Asia version

P/N	Version	Check Sum	Contents of Modification	Cut-in Month
G5705426	2.10	2DFD	Firmware installed from the first mass production run.	December, 2001
G5705426A	2.12	920A	<ul style="list-style-type: none"> • The following has been fixed: <ul style="list-style-type: none"> ※ Characters preceding a backslash appear as a “¥” on the User Program SMC report. 	May, 2002

For EU version

P/N	Version	Check Sum	Contents of Modification	Cut-in Month
G5705427	2.10	D529	Firmware installed from the first mass production run.	December, 2001
G5705427A	2.12	878D	<ul style="list-style-type: none"> • The following have been fixed: <ul style="list-style-type: none"> ※ The key name for Sub TX Mode is displayed as “Sub RX Mode” on the LCD if Spanish is selected. ※ Characters preceding a backslash appear as a “¥” on the User Program SMC report. 	May, 2002

Model: Model-J CF		Date: 18-Jul-02	No.: RG570004
Subject: SC230		Prepared by: H. Someya	
From: Technical Services sec. Service Planning Dept.			
Classification:	<input checked="" type="checkbox"/> Troubleshooting	<input type="checkbox"/> Part information	<input checked="" type="checkbox"/> Action required
	<input type="checkbox"/> Mechanical	<input type="checkbox"/> Electrical	<input type="checkbox"/> Service manual revision
	<input type="checkbox"/> Paper path	<input type="checkbox"/> Transmit/receive	<input type="checkbox"/> Retrofit information
	<input type="checkbox"/> Other ()		

Symptom:

SC230 may occur when the automatic line position adjustment (MUSIC) is performed.

Note: This occurs approximately 1/100 times, and only with mainframe BCU board ASIC version 4 (Gate Array PCI).

Cause:

The ASIC normally uses the system clock signal generated by the IPU, and then changes over to that generated by the BCU board when performing MUSIC. However, since these two clock signals are not synchronized, an ASIC reset can sometimes occur, which prevents it from generating the FGATE signal and results in SC230.

Production Countermeasure:

The engine firmware has been changed so that the ASIC always uses the IPU system clock signal to generate the FGATE signal, even when performing MUSIC. This has been applied from engine firmware ver B1.18B, a separate bulletin for which has been issued to announce the firmware modification history.

Production cut-in S/Ns:

G060-17: From P6020600550

G060-22: From P6020601051

G060-24: From L0882070001

G060-26: From 4G80620001

G060-27: From P6020601901

G060-29: From P6020602395

Model: Model-J CF

Date: 18-Jul-02

No.: RG570004

Action in the Field:

Update the engine firmware to ver B1.18B or newer on machines containing BCU board ASIC Version 4 and system firmware B1.18 or older.

P1b Printers containing BCU ASIC version 4:

G060-17: from P6020100116

G060-22: from P6020101811

G060-24: from L0882010081

G060-26: from 4G80220001

G060-27: from P6020102576

G060-29: from P6020103303

Note: If ver B1.18B is not immediately available, turn the main switch Off/On to clear the condition.

Reissued: 26-Jul-02

Model: Model-J CF	Date: 15-Mar-02	No.: RG570003b
-------------------	-----------------	----------------

RTB Reissue

Subject: Firmware Modification		Prepared by: H. Someya	
From: Technical Services sec. Service Planning Dept.			
Classification:	<input type="checkbox"/> Troubleshooting	<input checked="" type="checkbox"/> Part information	<input type="checkbox"/> Action required
	<input type="checkbox"/> Mechanical	<input type="checkbox"/> Electrical	<input type="checkbox"/> Service manual revision
	<input type="checkbox"/> Paper path	<input type="checkbox"/> Transmit/receive	<input type="checkbox"/> Retrofit information
	<input type="checkbox"/> Other ()		

Firmware modification history for the Model-J CF (details begin on page 2).

	Controller DIMM1	Controller DIMM 2		IPU	Operation Panel
Firmware Type	System, Copier Application, Netfile Application	Printer Application	Scanner Application	Scanner IPU	LCDC
Remarks					

RTB Revision List

Issue Date	Control Symbol	Revised contents
14-Mar-02	-	First edition
19-Jul-02	<<A>>	System: 1.07 → 1.08 Printer Application: 1.07 → 1.08 LCDC: 2.10 → 2.12
26-Jul-02	<>	Printer Application: 1.08 → 1.08.5 → 1.09

Model: Model-J CF	Date: 15-Mar-02	No.: RG570003
-------------------	-----------------	---------------

Modification History

1. System, Copy Application, Netfile Application Firmware

Nothing new

2. Printer Application Firmware

P/N	Version	Check Sum	Contents of Modification	Cut-in Month
G5705391G <>	1.08.5	FD19	<ul style="list-style-type: none"> • Counter values displayed on the configuration sheet for "Pages Printed" have been changed as follows: <ul style="list-style-type: none"> ※ SP7-003-01 [-20 / -21] → SP7-003-01 [-30 / -23]. • The following have been fixed: <ul style="list-style-type: none"> ※ PCL <ul style="list-style-type: none"> - Modified the dither size for when the UDFP command is used (GFPR# RE02030021) ※ PS <ul style="list-style-type: none"> - The margin for Custom size has been changed from 12 to 11 points to expand the maximum printing area. - Modified the dither setting for when the DeviceGray command is used. • Change in Specification: Supports the Status Readback function of PCL5e. 	June, 2002
G5705391H <>	1.09	9809	<ul style="list-style-type: none"> • The following has been fixed: <ul style="list-style-type: none"> ※ The printing speed of a PS job slows down after a PS3 job is reset. 	July, 2002

3. Scanner Application Firmware

Nothing new

4. Scanner IPU Firmware

Nothing new

5. LCDC Firmware

Nothing new

Reissued: 29-Aug-02

Model: Model-J CF	Date: 15-Mar-02	No.: RG570003c
-------------------	-----------------	----------------

RTB Reissue

Subject: Firmware Modification		Prepared by: H. Someya	
From: Technical Services sec. Service Planning Dept.			
Classification:	<input type="checkbox"/> Troubleshooting	<input checked="" type="checkbox"/> Part information	<input type="checkbox"/> Action required
	<input type="checkbox"/> Mechanical	<input type="checkbox"/> Electrical	<input type="checkbox"/> Service manual revision
	<input type="checkbox"/> Paper path	<input type="checkbox"/> Transmit/receive	<input type="checkbox"/> Retrofit information
	<input type="checkbox"/> Other ()		

Firmware modification history for the Model-J CF (details begin on page 2).

	Controller DIMM1	Controller DIMM 2		IPU	Operation Panel
Firmware Type	System, Copier Application, Netfile Application	Printer Application	Scanner Application	Scanner IPU	LCDC
Remarks					

RTB Revision List

Issue Date	Control Symbol	Revised contents
14-Mar-02	-	First edition
19-Jul-02	<<A>>	System: 1.07 → 1.08 Printer Application: 1.07 → 1.08 LCDC: 2.10 → 2.12
26-Jul-02	<>	Printer Application: 1.08 → 1.08.5 → 1.09
29-Aug-02	<<C>>	System: 1.08 → 1.09

Reissued-29-Aug-02

Model: Model-J CF	Date: 15-Mar-02	No.: RG570003c
-------------------	-----------------	----------------

Modification History

1. System, Copy Application, Netfile Application Firmware

P/N	System Version	Check Sum	Contents of Modification	Cut-in Month
G5706688C <<C>>	1.09	A548	<ul style="list-style-type: none">Files stored on the Document Server using fax or scan mode can be moved or copied using DeskTopBinder.	August, 2002

2. Printer Application Firmware

Nothing new

3. Scanner Application Firmware

Nothing new

4. Scanner IPU Firmware

Nothing new

5. LCDC Firmware

Nothing new

Model: Model-J CF		Date: 6-Dec-02	No.: RG570005
Subject: SC818		Prepared by: H.Taguchi	
From: Technical Services sec. Service Planning Dept.			
Classification:	<input checked="" type="checkbox"/> Troubleshooting	<input type="checkbox"/> Part information	<input checked="" type="checkbox"/> Action required
	<input type="checkbox"/> Mechanical	<input type="checkbox"/> Electrical	<input type="checkbox"/> Service manual revision
	<input type="checkbox"/> Paper path	<input type="checkbox"/> Transmit/receive	<input type="checkbox"/> Retrofit information
	<input type="checkbox"/> Other ()		

SYMPTOM

SC818 is displayed about 10 seconds after the operation switch is turned off, or when the Energy Saver timer reaches its limit and tries to shut down the system.

CAUSE

IC20 on the LCDC board functions out of specification. With this IC, the controller ASIC (COMIC) always receives an interrupt signal in Energy Saver Mode, disabling it from performing any other process.

SOLUTION

Replace the LCDC board.

Affected Units:

A total of 108 defective ICs out of the following range of 407 units:

G570-27: from P6720500493 to -651 (159 units)

 : from P6720600171 to -388 (218 units)

G570-26: from 4H2060001 to -30 (30 units)

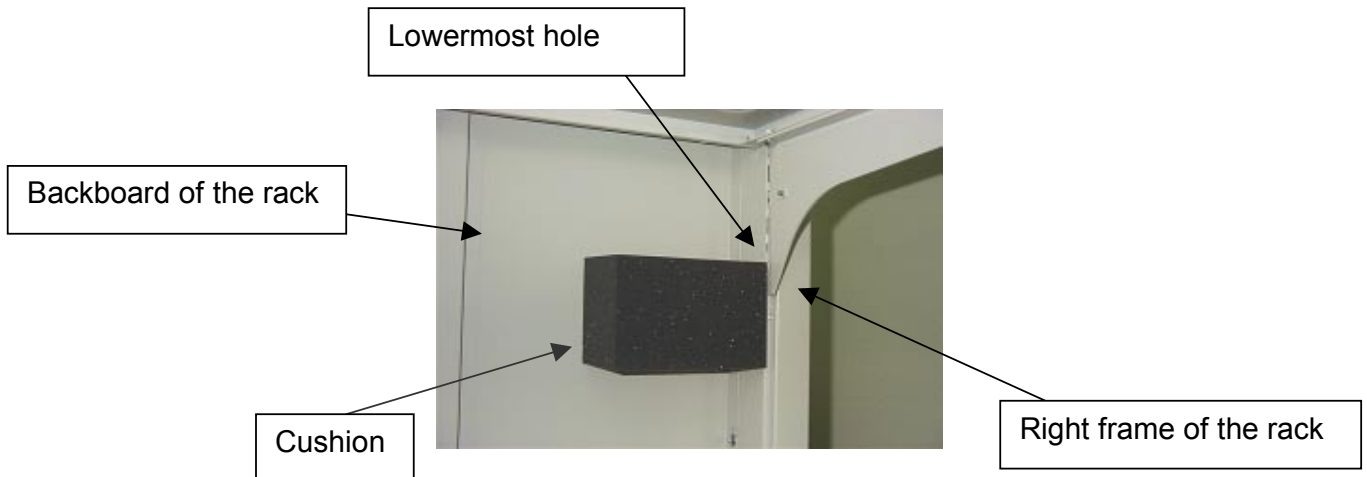
Model: Model-J CF		Date: 9-Dec-02	No.: RG570006
Subject: Required action when installing the CF expander		Prepared by: H.Taguchi	
From: Technical Services sec. Service Planning Dept.			
Classification:	<input type="checkbox"/> Troubleshooting	<input type="checkbox"/> Part information	<input checked="" type="checkbox"/> Action required
	<input type="checkbox"/> Mechanical	<input type="checkbox"/> Electrical	<input type="checkbox"/> Service manual revision
	<input type="checkbox"/> Paper path	<input type="checkbox"/> Transmit/receive	<input type="checkbox"/> Retrofit information
	<input type="checkbox"/> Other ()		

Symptom:

The right frame of the CF Rack can pinch the IPU connector, causing an SC error (mainly SC672) to occur, or a blank operation panel display at power on.

Action:

Attach the cushion shown below to the backboard of the CF Rack before docking the rack and mainframe. This cushion has been packed with the CF Expander Unit from the serial numbers listed below.



NOTE 1: When adhering the cushion to the backboard, make sure to position it flush against the surface of the rear face of the right frame, just below the lowermost hole in the frame.

NOTE 2: The cushion must be attached regardless of what paper feed stations are installed (e.g. PFU, LCT), and always in the position shown above.

Cut-in Serial Numbers

- G57017: from P6720700025
- G57026: from 4H20820001
- G57027: from P6720700300
- G57029: from P6720700706

Model: General RTB		Date: 27-Dec-02	No.: RGene012
Subject: GW Products - Hardware Ethernet Problem		Prepared by: T. Itoh	
From: Technical Services Sec. Service Planning Dept.			
Classification:	<input checked="" type="checkbox"/> Troubleshooting	<input type="checkbox"/> Part information	<input type="checkbox"/> Action required
	<input type="checkbox"/> Mechanical	<input type="checkbox"/> Electrical	<input type="checkbox"/> Service manual revision
	<input type="checkbox"/> Paper path	<input type="checkbox"/> Transmit/receive	<input type="checkbox"/> Retrofit information
	<input type="checkbox"/> Other ()		

SYMPTOM

When the main switch is turned on, the error message “Hardware Ethernet Problem” may be displayed under the following condition on the GW-based products.

Conditions:

- Network speed on the hub has been set to 100Mbps fixed with full duplex, and
- Length of network cable is too long (60 m or more) or the cable quality is not good enough

CAUSE

When the main switch is turned on, the machine performs a loop-back test. If the cable length is too long or its quality is not good enough, the damping factor for the data transmission becomes worse, and the machine incorrectly detects an error during this test. This happens only when the network speed is set to 100Mbps fixed with full duplex. The PHY chip used on the controller board causes this.

SOLUTION

- Temporary Solution -

- Set the network speed on the hub to Auto-sensing,
- Use a shorter cable or a cable with a lower damping factor, or
- Disconnect the network cable and power on the printer; then, set the cable after the printer comes to the ready condition.

- Permanent Solution -

The controller firmware will be modified to avoid the incorrect detection of this error message. The schedule of firmware modification is as follows.

Product Type	Product	Firmware Modification Cut-in Schedule
Fax	Kaiser 3	at next modification
Printer	Model-K P1	
	Model-K P2	
	Model-J P1b	
	Model-J CF	
	Model-U P1e	'03 January production run
	Model-A P3	'03 March production run
MFP	Model-R C2	at next modification run
	Model-A C2	
	Model-M C1	
	Model-U C1	'03 February production run

NOTE:
Firmware will be posted in the usual manner when it is released.

Reissued: 31-Jan-03

Model: Model-J CF	Date: 15-Mar-02	No.: RG570003e
-------------------	-----------------	----------------

RTB Reissue

Subject: Firmware Modification		Prepared by: H. Someya	
From: Technical Services Sec. Service Planning Dept.			
Classification:	<input type="checkbox"/> Troubleshooting	<input checked="" type="checkbox"/> Part information	<input type="checkbox"/> Action required
	<input type="checkbox"/> Mechanical	<input type="checkbox"/> Electrical	<input type="checkbox"/> Service manual revision
	<input type="checkbox"/> Paper path	<input type="checkbox"/> Transmit/receive	<input type="checkbox"/> Retrofit information
	<input type="checkbox"/> Other ()		

This bulletin explains the firmware modification history for the Model-J CF (details begin on page 2).

	Controller DIMM1	Controller DIMM 2		IPU	Operation Panel
Firmware Type	System, Copier Application, Netfile Application	Printer Application	Scanner Application	Scanner IPU	LCDC
Remarks					

RTB Revision List

Issue Date	Control Symbol	Revised contents
14-Mar-02	-	First edition
19-Jul-02	<<A>>	System: 1.07 → 1.08 Printer Application: 1.07 → 1.08 LCDC: 2.10 → 2.12
26-Jul-02	<>	Printer Application: 1.08 → 1.08.5 → 1.09
29-Aug-02	<<C>>	System: 1.08 → 1.09
01-Nov-02	<<D>>	System: 1.09 → 1.10 Printer Application: 1.09 → 1.11
31-Jan-03	<<E>>	Printer Application: 1.11 → 1.12

Reissued-29-Aug-02

Model: Model-J CF	Date: 15-Mar-02	No.: RG570003c
-------------------	-----------------	----------------

[Modification History]

1. System, Copy Application, Netfile Application Firmware

P/N	System Version	Check Sum	Contents of Modification	Cut-in Month
G5705388B	1.02	-	Firmware installed from the first mass production run.	December, 2001
G5705388C	1.05	-	<ul style="list-style-type: none"> • Letterhead Mode has been added (see RTB #RG060006 for details). • Date and time display format for Asia has been changed to that of Europe. • SP7-904 [Print: Printer Gamma] has been deleted. • SP7-807 [SC Jam Counter Clear] has been added. • The following has been fixed: <ul style="list-style-type: none"> ※ The staple LED on the operation panel does not light at staple end condition. 	January, 2002
G5706688	1.07	0CC4	<ul style="list-style-type: none"> • The meter click counter specification has been changed so that copies made in SP mode are not counted up. With this modification, SC999 is detected when updating the engine main firmware from ver1.15E or older to 1.07 or later (see RTB #RG570002 for details). • A grid pattern has been added to SP mode copy images. To activate this, it is necessary to use system firmware ver1.07 or newer. • Specification changed so that the red LED for the printer application key top lights up when an alert condition is detected (e.g. fusing/oil supply unit near end). Just as with the G060 printer, the LED lighting conditions depend on the setting of SP5-930-3. • RMS is supported with the use of the customized controller (field monitoring machines only). • The following have been fixed: <ul style="list-style-type: none"> ※ The Punch Counter counts up by 2 for every sheet punched when using the function in Duplex Mode. ※ Executing system settings reset does not clear the password settings for stored documents or change the setting for Auto-off (energy saver 2) back to default. ※ Printed sheets are fed out to shift tray 2 of the finisher in punch/staple mode. ※ Centering problem when printing onto 12" x 18" paper. 	March, 2002
G5706688A <<A>>	1.08	0E02	<ul style="list-style-type: none"> • The following have been fixed: <ul style="list-style-type: none"> ※ When scanning originals in color mode, the machine freezes if the HDD is in the near-full condition and the scanned data is saved in JPEG format. <p>"8 1/4 x 14 SEF" is displayed when the machine detects 8 1/2 x 14 SEF.</p>	May, 2002

Reissued-29-Aug-02

Model: Model-J CF	Date: 15-Mar-02	No.: RG570003c
-------------------	-----------------	----------------

P/N	System Version	Check Sum	Contents of Modification	Cut-in Month
G5706688C <<C>>	1.09	A548	<ul style="list-style-type: none"> Files stored on the Document Server using fax or scan mode can be moved or copied using DeskTopBinder. 	August, 2002
G5706688D <<D>>	1.10	24E9	<ul style="list-style-type: none"> New SP mode added: SP3-922 (see engine main firmware version B1.21 for details). 	September, 2002

2. Printer Application Firmware

P/N	Version	Check Sum	Contents of Modification	Cut-in Month
G5705391B	1.02	-	Firmware installed from the first mass production run.	December, 2001
G5705391C	1.05	-	<ul style="list-style-type: none"> The following has been fixed: Paper is not punched at the designated position in Series Print mode (see RTB RGene010 for details on Series Print mode). 	January, 2002
G5705391D	1.06	-	<ul style="list-style-type: none"> The following has been fixed: While downloading PS fonts to a machine with the HDD option installed, the correct PS serial number cannot be output. 	February, 2002
G5705391E	1.07	2EB8	<ul style="list-style-type: none"> Euro fonts PC858, ISO8859-15, L9, PS Math and MC Text are now supported. PS performance improvement. The followings have been fixed: <ul style="list-style-type: none"> ※ When the undefined command, "<ESC>&k#w", is received, it appears on the output as a character string [e.g. as "<ESC>&k6w"]. ※ If Job Reset is selected while the first page of a multiple-page document is being processed, the panel continues to display "Printing". ※ AutoContinue timer bug. 	March, 2002
G5705391F <<A>>	1.08	972E	<ul style="list-style-type: none"> The following have been fixed: <ul style="list-style-type: none"> ※ The panel indicates an Offline status when recovering from Energy Saver mode. ※ The software allows a password of less than 4 characters to be set for Locked Printing. ※ The panel freezes when the following is performed: <ol style="list-style-type: none"> Several tabs are accessed in User Tools – Printer Features. Bypass Paper Size is selected in the Paper Input tab and the custom paper size is set. ※ The panel freezes when a punch error occurs in Series Print mode. ※ Certain characters do not print (GFPR #RC02010008). Change in Specification: 	May, 2002

Reissued-29-Aug-02

Model: Model-J CF	Date: 15-Mar-02	No.: RG570003c
-------------------	-----------------	----------------

P/N	Version	Check Sum	Contents of Modification	Cut-in Month
			<ul style="list-style-type: none"> ※ The icon for Letterhead with duplex on the initial display for Copier mode has been changed to match that of the other paper icons. ※ PCL <ul style="list-style-type: none"> - Modified so that all characters in symbol sets MS Text and Windows Baltic (19L) print out the same as with HP. - When the HDD option is not installed, the PCL HDD Directory List and Font Source sections will not appear on the PCL Configuration Page. ※ PS <ul style="list-style-type: none"> - The black dither will not be used with the DeviceGray command. 	
G5705391G <>	1.08.5	FD19	<ul style="list-style-type: none"> • Counter values displayed on the configuration sheet for "Pages Printed" have been changed as follows: <ul style="list-style-type: none"> ※ SP7-003-01 [-20 / -21] → SP7-003-01 [-30 / -23]. • The following have been fixed: <ul style="list-style-type: none"> ※ PCL <ul style="list-style-type: none"> - Modified the dither size for when the UDFP command is used (GFPR# RE02030021) ※ PS <ul style="list-style-type: none"> - The margin for Custom size has been changed from 12 to 11 points to expand the maximum printing area. - Modified the dither setting for when the DeviceGray command is used. • Change in Specification: Supports the Status Readback function of the PCL5e. 	June, 2002
G5705391H <>	1.09	9809	<ul style="list-style-type: none"> • The following has been fixed: <ul style="list-style-type: none"> ※ The printing speed of a PS job slows down after a PS3 job is reset. 	July, 2002

Reissued-29-Aug-02

Model: Model-J CF	Date: 15-Mar-02	No.: RG570003c
-------------------	-----------------	----------------

P/N	Version	Check Sum	Contents of Modification	Cut-in Month
G5705391J <<D>>	1.11	C775	<ul style="list-style-type: none">• Counter values displayed on the configuration sheet for "Pages Printed" have been changed as follows for when Meter Click Charge mode is on and development count method has been selected: SP7-003-01 [-30 / -23] → SP7-003-01 [-20 / -21]• It does not go Online when the time setting is changed greatly on the operation panel.• When paper size error occurs using PCL printing, the printer error message of SNM for Client is not displayed on the PC.• The following have been fixed:<ul style="list-style-type: none">※ Toner near end alert of the replaced toner doesn't disappear even if one of the toner cartridges is replaced when more than one toner are toner near end condition.※ PCL<ul style="list-style-type: none">- Euro font does not print correctly.- Line Spacing Command, "Esc&l#D", causes incorrect output.(GFPR# RC02050002)- Slow Printing from AutoCAD.(GFPR# RC02070001)※ PS<ul style="list-style-type: none">- Euro symbol is not printed.(GFPR# RC02040005) Please refer to RTB #RGENE011 which will be issued soon, for the procedure of how to fix this issue.- PS print file is printed as text.(GFPR# RE02040013)	October, 2002

Reissued-29-Aug-02

Model: Model-J CF	Date: 15-Mar-02	No.: RG570003c
-------------------	-----------------	----------------

P/N	Version	Check Sum	Contents of Modification	Cut-in Month
G5705391K <<E>>	1.12	EE00	<ul style="list-style-type: none"> • The following have been fixed: <ul style="list-style-type: none"> ※ After using a User Tool at the operation panel, PCL print jobs may keep showing "Printing..." on operation panel. ※ The Form Lines value (in the PCL Menu) changes after you reboot the Machine. (GFPR# RA02090003) ※ PCL <ul style="list-style-type: none"> - Response to the PJJL INFO CONFIG command does not include a serial number. - The print job may stop during the processing of the file when using "INFICO". (GFPR# RE02090012) - The work area of the RAM is reduced whenever fonts that have been downloaded to the HDD are used. ※ PS <ul style="list-style-type: none"> - 16bit color blend data does not print correctly. (TechMail#RE0200414) - Slow Printing from AutoCAD. (GFPR# RC02070001) - Printing may not work correctly when a protocol other than EtherTalk is used with Macintosh 8.x/9.x.(TechMail#UK020107) - The printer controller locks up when printing from Unix Acrobat. - Lines may be printed on the blank parts of the page. - The error log is not included on the Configuration page when the punch error occurred. - When data is sent that outputs 3 hole punch to the European model (which supports 2&4 hole punch), the output has 2 hole punch. (Now the output has no punch holes). - Printing on envelopes may not work correctly. ※ PJJL <ul style="list-style-type: none"> - Response to the PJJL INFO CONFIG command does not include a serial number. 	December, 2002

3. Scanner Application Firmware

P/N	Version	Check Sum	Contents of Modification	Cut-in Month
G5705386A	1.00	-	Firmware installed from the first mass production run.	December, 2001
G5705386B	1.03	DCB6	<ul style="list-style-type: none"> • The following has been fixed: <ul style="list-style-type: none"> ※ PP mode software bug 	January, 2002

Reissued-29-Aug-02

Model: Model-J CF	Date: 15-Mar-02	No.: RG570003c
-------------------	-----------------	----------------

4. Scanner IPU Firmware

P/N	Version	Check Sum	Contents of Modification	Cut-in Month
G5705350H	1.10	-	Firmware installed from the first mass production run.	December, 2001
G5705350J	1.12	507A	<ul style="list-style-type: none"> • Scanner software modified to effectively minimize variations in SBU board scanner controller output. • The following has been fixed: <ul style="list-style-type: none"> ※ A color misalignment appears when the full-page cover sheet and combine functions are selected. 	February, 2002

5. LCDC Firmware

[For NA/Asia version]

P/N	Version	Check Sum	Contents of Modification	Cut-in Month
G5705426	2.10	2DFD	Firmware installed from the first mass production run.	December, 2001
G5705426A <<A>>	2.12	920A	<ul style="list-style-type: none"> • The following has been fixed: <ul style="list-style-type: none"> ※ Characters preceding a backslash appear as a “¥” on the User Program SMC report. 	May, 2002

[For EU version]

P/N	Version	Check Sum	Contents of Modification	Cut-in Month
G5705427	2.10	D529	Firmware installed from the first mass production run.	December, 2001
G5705427A <<A>>	2.12	878D	<ul style="list-style-type: none"> • The following have been fixed: <ul style="list-style-type: none"> ※ The key name for Sub TX Mode is displayed as “Sub RX Mode” on the LCD if Spanish is selected. ※ Characters preceding a backslash appear as a “¥” on the User Program SMC report. 	May, 2002

Model: General RTB		Date: 8-Nov-02	No.: RGene011
Subject: Euro symbol not printed with PS driver		Prepared by: T. Itoh	
From: Technical Services sec. Service Planning Dept.			
Classification:	<input checked="" type="checkbox"/> Troubleshooting	<input type="checkbox"/> Part information	<input checked="" type="checkbox"/> Action required
	<input type="checkbox"/> Mechanical	<input type="checkbox"/> Electrical	<input type="checkbox"/> Service manual revision
	<input type="checkbox"/> Paper path	<input type="checkbox"/> Transmit/receive	<input type="checkbox"/> Retrofit information
	<input type="checkbox"/> Other ()		

SYMPTOM

When printing with the PS driver, the Euro currency symbol is not printed out with 112 of 136 fonts, which are stored in the font ROM in GW-based products.

The following are GW-based products:

Model-K3, Model-K P2, Russian-C2, Adonis- C2, Model-A P3, Model-J P1b, Model-J CF
Model-U P1, Model-U C1, Martini-C1.

CAUSE

The Euro currency symbol was not included in the font ROM.

SOLUTION

Temporary Solution (1)

A workaround for each operating system has been previously released on the FAQ page, and is included on pp. 5-8 below.

Temporary Solution (2)

Although the font ROM will be modified as a permanent solution (details below), before this can be applied, the controller firmware has been modified on the following GW-based products:

Product	Firmware Version	Product	Firmware Version
Model-K3	1.01 (Controller)	Model-J P1b	2.18 (Controller)
Model-K P2	1.06.1 (Controller)	Model-J CF	1.11 (Printer Application)
Russian-C2	2.03 (Printer Application)	Model-U P1	2.20 (Printer Application)
Adonis-C2	3.09 (Printer Application)	Model-U C1	1.22 (Printer Application)
Model-A P3	1.08 (Controller)	Martini-C1	1.01 (Printer Application)

Specifically, the Euro currency symbol has been added along with the “PS fonts download” feature, which allows the symbol to be downloaded to machine RAM. Enable this feature by changing the setting of Bit SW#3-0 to “1 (ON)” in SP mode (default: OFF).

Model: General RTB	Date: 8-Nov-02	No.: RGene011
--------------------	----------------	---------------

Remarks for Temporary Solution 2:

1. Switching PDL to PS takes approximate 7 to 10 seconds.

When PS fonts download is enabled, the Euro symbol is temporarily downloaded to the machine RAM at the first PS printing job, and whenever the PDL is switched from RPCS or PCL to PS. The total download time is approximately 7 to 10 seconds. This is because once the data is downloaded, it will remain in the RAM until the PDL is switched or the power turned off.

2. Printing high image area documents at 1200 dpi may cause a memory overflow error in machines equipped only with 32MB of memory (ex. Model-K P2).

This is because the PS fonts download feature uses approximately 800kB, which can bring the amount of available memory close to capacity with the above printing conditions.

Workaround:

- Printing at 600dpi may prevent an overflow, even with just the 32MB memory installed.
- Changing the memory usage setting from “Frame Priority” to “Font Priority” may prevent an overflow.

Permanent Solution

Modification of the font ROM on the ROM DIMM or the Controller Board, from October '02, production or later (details differ depending on the model). Specifically, the Euro currency symbol has been added to the 112 fonts mentioned above.

Note:

1. When the new ROM DIMM or Controller Board is installed, it is not necessary to disable the PS fonts download feature (temporary solution).
2. An MB will be issued separately announcing the P/N change for the ROMM DIMM and Controller Boards, and cut-in serial number.

ROM DIMM and Controller Board P/N:

Model	Where the font ROM is soldered	Current P/N	Model	Where the font ROM is soldered	Current P/N
Model-K P2	Controller	G0735712	Model-J CF	ROM DIMM	G5706687
		G0745712	Model-U P1	ROM DIMM	G0705851
Adonis-C2	ROM DIMM	B3615117	Model-U C1	ROM DIMM	B5295117
		B3625118			B4635117
Model-A P3	Controller	G0656022	Martini-C1	ROM DIMM	G3395117
		G0656023			G3385117
Russian-C2	ROM DIMM	B4615117	Model-K3	Controller	B5165750
		B4535117			
Model-J P1b	ROM DIMM	G0776120			

Model: General RTB	Date: 8-Nov-02	No.: RGene011
--------------------	----------------	---------------

Font Table

	Euro symbol is printed correctly.
	This is a symbol font, so no countermeasure is applied.
	Both temporary and permanent solutions work to print out the Euro currency symbol correctly.

AlbertusMT	Helvetica	Univers
AlbertusMT-Italic	Helvetica-Bold	Univers-Bold
AlbertusMT-Light	Helvetica-BoldOblique	Univers-BoldExt
AntiqueOlive-Bold	Helvetica-Condensed	Univers-BoldExtObl
AntiqueOlive-Compact	Helvetica-Condensed-Bold	Univers-BoldOblique
AntiqueOlive-Italic	Helvetica-Condensed-BoldObl	Univers-Condensed
AntiqueOlive-Roman	Helvetica-Condensed-Oblique	Univers-CondensedBold
Apple-Chancery	Helvetica-Narrow	Univers-CondensedBoldOblique
Arial-BoldItalicMT	Helvetica-Narrow-Bold	Univers-CondensedOblique
Arial-BoldMT	Helvetica-Narrow-BoldOblique	Univers-Extended
Arial-ItalicMT	Helvetica-Narrow-Oblique	Univers-ExtendedObl
ArialMT	Helvetica-Oblique	Univers-Light
AvantGarde-Book	HoeflerText-Black	Univers-LightOblique
AvantGarde-BookOblique	HoeflerText-BlackItalic	Univers-Oblique
AvantGarde-Demi	HoeflerText-Italic	Wingdings-Regular
AvantGarde-DemiOblique	HoeflerText-Ornaments	ZapfChancery-MediumItalic
Bodoni	HoeflerText-Regular	ZapfDingbats
Bodoni-Bold	JoannaMT	
Bodoni-BoldItalic	JoannaMT-Bold	
Bodoni-Italic	JoannaMT-BoldItalic	
Bodoni-Poster	JoannaMT-Italic	
Bodoni-PosterCompressed	LetterGothic	
Bookman-Demi	LetterGothic-Bold	
Bookman-DemiItalic	LetterGothic-BoldSlanted	
Bookman-Light	LetterGothic-Slanted	
Bookman-LightItalic	LubalinGraph-Book	
Carta	LubalinGraph-BookOblique	
Chicago	LubalinGraph-Demi	
Clarendon	LubalinGraph-DemiOblique	
Clarendon-Bold	Marigold	
Clarendon-Light	MonaLisa-Recut	
CooperBlack	Monaco	
CooperBlack-Italic	NewCenturySchlbk-Bold	
Copperplate-ThirtyThreeBC	NewCenturySchlbk-BoldItalic	
Copperplate-ThirtyTwoBC	NewCenturySchlbk-Italic	
Coronet-Regular	NewCenturySchlbk-Roman	
Courier	NewYork	
Courier-Bold	Optima	
Courier-BoldOblique	Optima-Bold	
Courier-Oblique	Optima-BoldItalic	
Eurostile	Optima-Italic	
Eurostile-Bold	Oxford	
Eurostile-BoldExtendedTwo	Palatino-Bold	
Eurostile-ExtendedTwo	Palatino-BoldItalic	

Model: General RTB	Date: 8-Nov-02	No.: RGene011
--------------------	----------------	---------------

Geneva	Palatino-Italic
GillSans	Palatino-Roman
GillSans-Bold	StempelGaramond-Bold
GillSans-BoldCondensed	StempelGaramond-BoldItalic
GillSans-BoldItalic	StempelGaramond-Italic
GillSans-Condensed	StempelGaramond-Roman
GillSans-ExtraBold	Symbol
GillSans-Italic	Tekton
GillSans-Light	Times-Bold
GillSans-LightItalic	Times-BoldItalic
Goudy	Times-Italic
Goudy-Bold	Times-Roman
Goudy-BoldItalic	TimesNewRomanPS-BoldItalicMT
Goudy-ExtraBold	TimesNewRomanPS-BoldMT
Goudy-Italic	TimesNewRomanPS-ItalicMT
	TimesNewRomanPSMT

Model: General RTB	Date: 8-Nov-02	No.: RGene011
--------------------	----------------	---------------

Workaround Announced on the FAQ Page

Question:

Euro Fonts printing problem

Answer:

If Euro Fonts can't be printed by the PS driver, the following solutions may be effective.

Solution

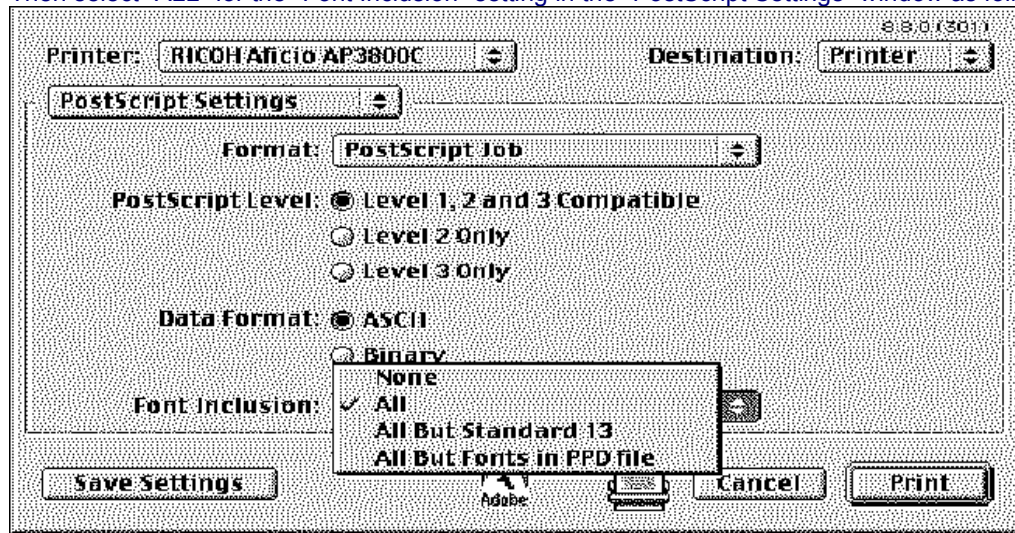
MacOS 9.x / 8.x

Use the AdobePS 8.8 printer driver.

Get the printer driver from the Adobe site on the web.

<http://www.adobe.com/support/downloads/product.jsp?product=44&platform=Macintosh>

Then select "ALL" for the "Font Inclusion" setting in the "PostScript Settings" window as follows.



Windows 95

Update Windows95 to "Euro Currency Support for Windows95".

You can get it from the following URL.

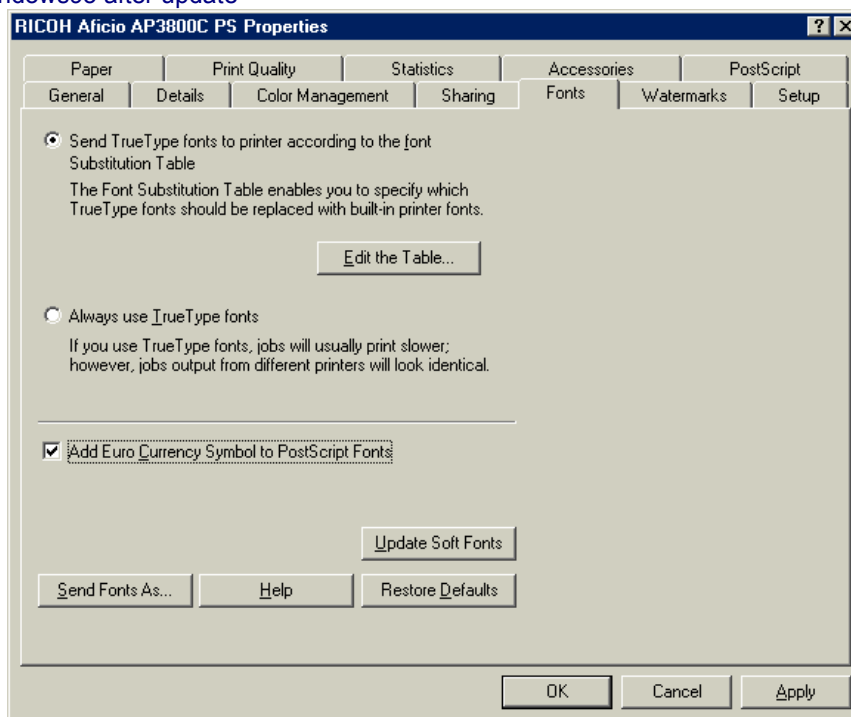
http://www.microsoft.com/windows95/downloads/contents/WURecommended/S_WUFeatured/W95EuroPatch/Default.asp

Then the "Add Euro Currency Symbol to PostScript Fonts" check box is available.

Check "Add Euro Currency Symbol to PostScript Fonts". (Before update, the check box doesn't work.)

Model: General RTB	Date: 8-Nov-02	No.: RGene011
--------------------	----------------	---------------

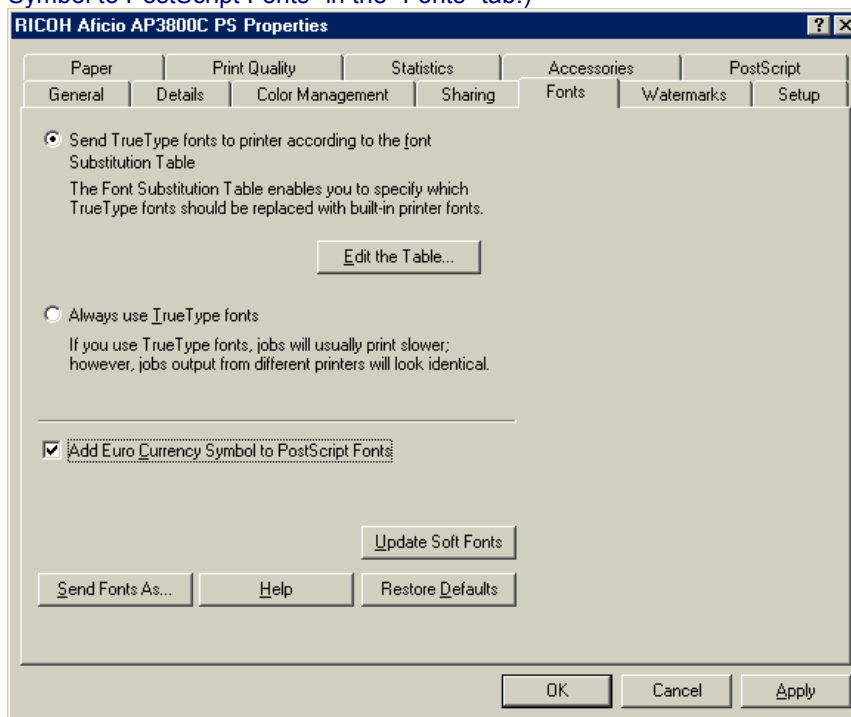
Windows95 after update



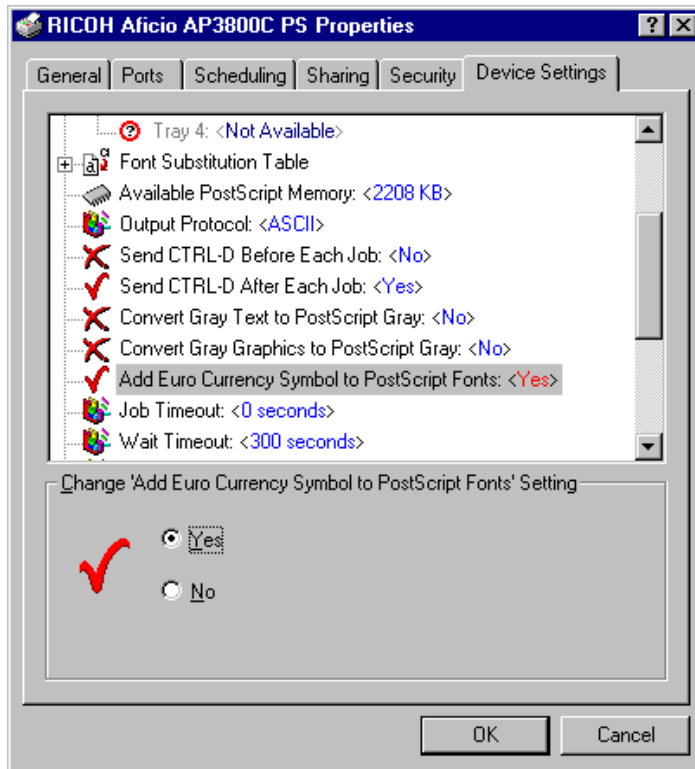
Windows 98 / ME / NT4.0 / XP

Check "Add Euro Currency Symbol to PostScript Fonts" .

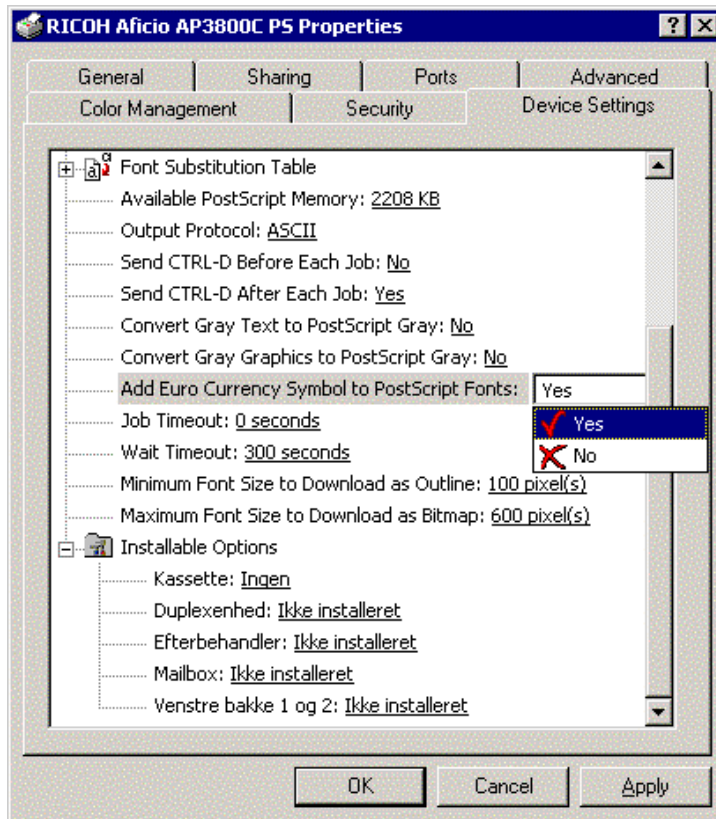
Windows 98 / ME (Note: The AdobePS driver version 4.3.1 or later has "Add Euro Currency Symbol to PostScript Fonts" in the "Fonts" tab.)



Windows NT4.0



Windows XP



Model: General RTB	Date: 8-Nov-02	No.: RGene011
--------------------	----------------	---------------

Windows 2000

Update the printer driver to v5.5.2 or later.

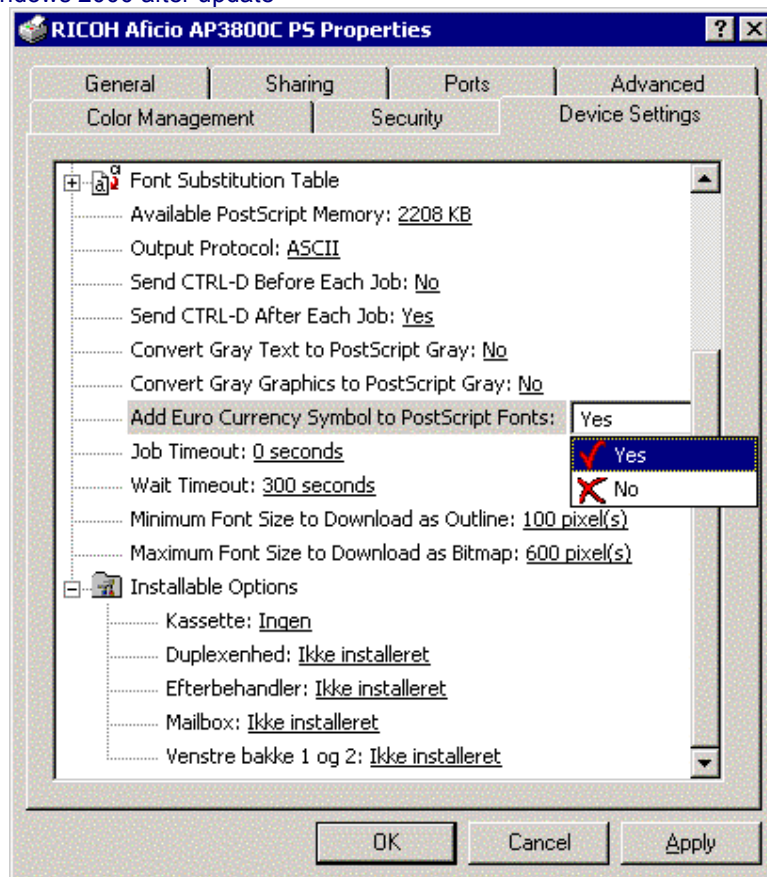
You can get it from the printer driver v1.0.6 on the Adobe web site that includes the W2000 driver v 5.5.2.

<http://www.adobe.com/support/downloads/product.jsp?product=44&platform=Windows>

Then the "Add Euro Currency Symbol to PostScript Fonts" check box is displayed.

Check "Add Euro Currency Symbol to PostScript Fonts".

Windows 2000 after update



Reissued: 7-Feb-03

Model: Model-J CF	Date: 15-Mar-02	No.: RG570003f
-------------------	-----------------	----------------

RTB Reissue

Subject: Firmware Modification		Prepared by: H. Taguchi	
From: Technical Services Sec. Service Planning Dept.			
Classification:	<input type="checkbox"/> Troubleshooting	<input checked="" type="checkbox"/> Part information	<input type="checkbox"/> Action required
	<input type="checkbox"/> Mechanical	<input type="checkbox"/> Electrical	<input type="checkbox"/> Service manual revision
	<input type="checkbox"/> Paper path	<input type="checkbox"/> Transmit/receive	<input type="checkbox"/> Retrofit information
	<input type="checkbox"/> Other ()		

This bulletin explains the firmware modification history for the Model-J CF (details begin on page 2).

	Controller DIMM1	Controller DIMM 2		IPU	Operation Panel
Firmware Type	System, Copier Application, Netfile Application	Printer Application	Scanner Application	Scanner IPU	LCDC
Remarks					

RTB Revision List

Issue Date	Control Symbol	Revised contents
14-Mar-02	-	First edition
19-Jul-02	<<A>>	System: 1.07 → 1.08 Printer Application: 1.07 → 1.08 LCDC: 2.10 → 2.12
26-Jul-02	<>	Printer Application: 1.08 → 1.08.5 → 1.09
29-Aug-02	<<C>>	System: 1.08 → 1.09
01-Nov-02	<<D>>	System: 1.09 → 1.10 Printer Application: 1.09 → 1.11
31-Jan-03	<<E>>	Printer Application: 1.11 → 1.12
7-Feb-03	<<F>>	Scanner IPU 1.12 → 1.18 → 1.20

Reissued-29-Aug-02

Model: Model-J CF	Date: 15-Mar-02	No.: RG570003c
-------------------	-----------------	----------------

[Modification History]

1. System, Copy Application, Netfile Application Firmware

P/N	System Version	Check Sum	Contents of Modification	Cut-in Month
G5705388B	1.02	-	Firmware installed from the first mass production run.	December, 2001
G5705388C	1.05	-	<ul style="list-style-type: none"> • Letterhead Mode has been added (see RTB #RG060006 for details). • Date and time display format for Asia has been changed to that of Europe. • SP7-904 [Print: Printer Gamma] has been deleted. • SP7-807 [SC Jam Counter Clear] has been added. • The following has been fixed: <ul style="list-style-type: none"> ※ The staple LED on the operation panel does not light at staple end condition. 	January, 2002
G5706688	1.07	0CC4	<ul style="list-style-type: none"> • The meter click counter specification has been changed so that copies made in SP mode are not counted up. With this modification, SC999 is detected when updating the engine main firmware from ver1.15E or older to 1.07 or later (see RTB #RG570002 for details). • A grid pattern has been added to SP mode copy images. To activate this, it is necessary to use system firmware ver1.07 or newer. • Specification changed so that the red LED for the printer application key top lights up when an alert condition is detected (e.g. fusing/oil supply unit near end). Just as with the G060 printer, the LED lighting conditions depend on the setting of SP5-930-3. • RMS is supported with the use of the customized controller (field monitoring machines only). • The following have been fixed: <ul style="list-style-type: none"> ※ The Punch Counter counts up by 2 for every sheet punched when using the function in Duplex Mode. ※ Executing system settings reset does not clear the password settings for stored documents or change the setting for Auto-off (energy saver 2) back to default. ※ Printed sheets are fed out to shift tray 2 of the finisher in punch/staple mode. ※ Centering problem when printing onto 12" x 18" paper. 	March, 2002
G5706688A <<A>>	1.08	0E02	<ul style="list-style-type: none"> • The following have been fixed: <ul style="list-style-type: none"> ※ When scanning originals in color mode, the machine freezes if the HDD is in the near-full condition and the scanned data is saved in JPEG format. <p>"8 1/4 x 14 SEF" is displayed when the machine detects 8 1/2 x 14 SEF.</p>	May, 2002

Reissued-29-Aug-02

Model: Model-J CF	Date: 15-Mar-02	No.: RG570003c
-------------------	-----------------	----------------

P/N	System Version	Check Sum	Contents of Modification	Cut-in Month
G5706688C <<C>>	1.09	A548	<ul style="list-style-type: none"> Files stored on the Document Server using fax or scan mode can be moved or copied using DeskTopBinder. 	August, 2002
G5706688D <<D>>	1.10	24E9	<ul style="list-style-type: none"> New SP mode added: SP3-922 (see engine main firmware version B1.21 for details). 	September, 2002

2. Printer Application Firmware

P/N	Version	Check Sum	Contents of Modification	Cut-in Month
G5705391B	1.02	-	Firmware installed from the first mass production run.	December, 2001
G5705391C	1.05	-	<ul style="list-style-type: none"> The following has been fixed: Paper is not punched at the designated position in Series Print mode (see RTB RGene010 for details on Series Print mode). 	January, 2002
G5705391D	1.06	-	<ul style="list-style-type: none"> The following has been fixed: While downloading PS fonts to a machine with the HDD option installed, the correct PS serial number cannot be output. 	February, 2002
G5705391E	1.07	2EB8	<ul style="list-style-type: none"> Euro fonts PC858, ISO8859-15, L9, PS Math and MC Text are now supported. PS performance improvement. The followings have been fixed: <ul style="list-style-type: none"> ※ When the undefined command, "<ESC>&k#w", is received, it appears on the output as a character string [e.g. as "<ESC>&k6w"]. ※ If Job Reset is selected while the first page of a multiple-page document is being processed, the panel continues to display "Printing". ※ AutoContinue timer bug. 	March, 2002
G5705391F <<A>>	1.08	972E	<ul style="list-style-type: none"> The following have been fixed: <ul style="list-style-type: none"> ※ The panel indicates an Offline status when recovering from Energy Saver mode. ※ The software allows a password of less than 4 characters to be set for Locked Printing. ※ The panel freezes when the following is performed: <ol style="list-style-type: none"> Several tabs are accessed in User Tools – Printer Features. Bypass Paper Size is selected in the Paper Input tab and the custom paper size is set. ※ The panel freezes when a punch error occurs in Series Print mode. ※ Certain characters do not print (GFPR #RC02010008). Change in Specification: 	May, 2002

Reissued-29-Aug-02

Model: Model-J CF	Date: 15-Mar-02	No.: RG570003c
-------------------	-----------------	----------------

P/N	Version	Check Sum	Contents of Modification	Cut-in Month
			<ul style="list-style-type: none"> ※ The icon for Letterhead with duplex on the initial display for Copier mode has been changed to match that of the other paper icons. ※ PCL <ul style="list-style-type: none"> - Modified so that all characters in symbol sets MS Text and Windows Baltic (19L) print out the same as with HP. - When the HDD option is not installed, the PCL HDD Directory List and Font Source sections will not appear on the PCL Configuration Page. ※ PS <ul style="list-style-type: none"> - The black dither will not be used with the DeviceGray command. 	
G5705391G <>	1.08.5	FD19	<ul style="list-style-type: none"> • Counter values displayed on the configuration sheet for "Pages Printed" have been changed as follows: <ul style="list-style-type: none"> ※ SP7-003-01 [-20 / -21] → SP7-003-01 [-30 / -23]. • The following have been fixed: <ul style="list-style-type: none"> ※ PCL <ul style="list-style-type: none"> - Modified the dither size for when the UDFP command is used (GFPR# RE02030021) ※ PS <ul style="list-style-type: none"> - The margin for Custom size has been changed from 12 to 11 points to expand the maximum printing area. - Modified the dither setting for when the DeviceGray command is used. • Change in Specification: Supports the Status Readback function of the PCL5e. 	June, 2002
G5705391H <>	1.09	9809	<ul style="list-style-type: none"> • The following has been fixed: <ul style="list-style-type: none"> ※ The printing speed of a PS job slows down after a PS3 job is reset. 	July, 2002

Reissued-29-Aug-02

Model: Model-J CF	Date: 15-Mar-02	No.: RG570003c
-------------------	-----------------	----------------

P/N	Version	Check Sum	Contents of Modification	Cut-in Month
G5705391J <<D>>	1.11	C775	<ul style="list-style-type: none"> • Counter values displayed on the configuration sheet for "Pages Printed" have been changed as follows for when Meter Click Charge mode is on and development count method has been selected: SP7-003-01 [-30 / -23] → SP7-003-01 [-20 / -21] • It does not go Online when the time setting is changed greatly on the operation panel. • When paper size error occurs using PCL printing, the printer error message of SNM for Client is not displayed on the PC. • The following have been fixed: <ul style="list-style-type: none"> ※ Toner near end alert of the replaced toner doesn't disappear even if one of the toner cartridges is replaced when more than one toner are toner near end condition. ※ PCL <ul style="list-style-type: none"> - Euro font does not print correctly. - Line Spacing Command, "Esc&l#D", causes incorrect output.(GFPR# RC02050002) - Slow Printing from AutoCAD.(GFPR# RC02070001) ※ PS <ul style="list-style-type: none"> - Euro symbol is not printed.(GFPR# RC02040005) Please refer to RTB #RGENE011 which will be issued soon, for the procedure of how to fix this issue. - PS print file is printed as text.(GFPR# RE02040013) 	October, 2002

Reissued-29-Aug-02

Model: Model-J CF	Date: 15-Mar-02	No.: RG570003c
-------------------	-----------------	----------------

P/N	Version	Check Sum	Contents of Modification	Cut-in Month
G5705391K <<E>>	1.12	EE00	<ul style="list-style-type: none"> • The following have been fixed: <ul style="list-style-type: none"> ※ After using User Tool on operation panel, PCL print jobs may keep showing "Printing..." on operation panel. ※ Form Lines value (under PCL Menu) change after reboot the Machine. (GFPR# RA02090003) ※ PCL <ul style="list-style-type: none"> - Response to PJI INFO CONFIG command does not include serial number. - The print may stop during the processing of the file when using "INFICO". (GFPR# RE02090012) - The work area of RAM is reduced whenever fonts that have been downloaded to HDD are used. ※ PS <ul style="list-style-type: none"> - 16bit color blend data does not print correctly. (TechMail#RE0200414) - Slow Printing from AutoCAD. (GFPR# RC02070001) - Printing may not work correctly when a protocol other than EtherTalk is used on Macintosh 8.x/9.x.(TechMail#UK020107) - The printer controller locks-up when printing from Unix Acrobat. - Lines may be printed on the blank of page. - The error log is not described in Configuration page when the punch error occurred. - When data is sent that outputs 3 hole punch to the European model (which supports 2&4 hole punch), output has 2 hole punch. (Now output has no punch). - Printing on envelope may not work correctly. ※ PJI <ul style="list-style-type: none"> - Response to PJI INFO CONFIG command does not include serial number. 	December, 2002

3. Scanner Application Firmware

P/N	Version	Check Sum	Contents of Modification	Cut-in Month
G5705386A	1.00	-	Firmware installed from the first mass production run.	December, 2001
G5705386B	1.03	DCB6	<ul style="list-style-type: none"> • The following has been fixed: <ul style="list-style-type: none"> ※ PP mode software bug 	January, 2002

Reissued-29-Aug-02

Model: Model-J CF	Date: 15-Mar-02	No.: RG570003c
-------------------	-----------------	----------------

4. Scanner IPU Firmware

P/N	Version	Check Sum	Contents of Modification	Cut-in Month
G5705350H	1.10	-	Firmware installed from the first mass production run.	December, 2001
G5705350J	1.12	507A	<ul style="list-style-type: none"> Scanner software modified to effectively minimize variations in SBU board scanner controller output. The following has been fixed: <ul style="list-style-type: none"> ※ A color misalignment appears when the full-page cover sheet and combine functions are selected. 	February, 2002
G5705350K <<F>>	1.18	EFE2	<ul style="list-style-type: none"> Firmware modified for use with the next model. 	December, 2002
G5705350L <<F>>	1.20	A856	<ul style="list-style-type: none"> The following has been fixed: <ul style="list-style-type: none"> * Shading correction error with ADF copies sometimes causes paleness or horizontal black or white bands. 	January, 2003

5. LCDC Firmware

[For NA/Asia version]

P/N	Version	Check Sum	Contents of Modification	Cut-in Month
G5705426	2.10	2DFD	Firmware installed from the first mass production run.	December, 2001
G5705426A <<A>>	2.12	920A	<ul style="list-style-type: none"> The following has been fixed: <ul style="list-style-type: none"> ※ Characters preceding a backslash appear as a “¥” on the User Program SMC report. 	May, 2002

[For EU version]

P/N	Version	Check Sum	Contents of Modification	Cut-in Month
G5705427	2.10	D529	Firmware installed from the first mass production run.	December, 2001

Reissued-29-Aug-02

Model: Model-J CF	Date: 15-Mar-02	No.: RG570003c
-------------------	-----------------	----------------

P/N	Version	Check Sum	Contents of Modification	Cut-in Month
G5705427A <<A>>	2.12	878D	<ul style="list-style-type: none">• The following have been fixed:<ul style="list-style-type: none">※ The key name for Sub TX Mode is displayed as "Sub RX Mode" on the LCD if Spanish is selected.※ Characters preceding a backslash appear as a "¥" on the User Program SMC report.	May, 2002

Model: Model-J CF		Date: 31-Jul-03	No.: RG570007
Subject: Additional SC codes		Prepared by: H.Taguchi	
From: 1st Tech. Support Sec. Service Support Dept.			
Classification:	<input type="checkbox"/> Troubleshooting <input type="checkbox"/> Part information <input type="checkbox"/> Action required <input type="checkbox"/> Mechanical <input type="checkbox"/> Electrical <input checked="" type="checkbox"/> Service manual revision <input type="checkbox"/> Paper path <input type="checkbox"/> Transmit/receive <input type="checkbox"/> Retrofit information <input type="checkbox"/> Other ()		

The following SCs have been added to the Service Manual.

Page 4-30

SC No.	Item	Definition	Possible Cause	Related SCs	Troubleshooting Procedure	Type
SC 660	BCU NVRAM read/write diagnostics error	A read/write diagnostics error is detected when the main switch is turned ON. Note: This only occurs with the 8kB NVRAM.	<ul style="list-style-type: none"> • Defective 8kB NVRAM (BCU) 		1. Turn the main switch OFF/ON. 2. Replace the NVRAM.	

Page 4-36

SC 800 (CF)	Startup without video output end error (K)	Video transfer to the engine is started, but the engine does not issue a video transmission end command within the specified time.	<ul style="list-style-type: none"> • Defective BCU 		1. Turn the main switch off and on. 2. Check the cable connection. 3. Replace the BCU.	B
SC 801 (CF)	Startup without video output end error (Y)	Video transfer to the engine is started, but the engine does not issue a video transmission end command within the specified time.	<ul style="list-style-type: none"> • Defective BCU 		1. Turn the main switch off and on. 2. Check the cable connection. 3. Replace the BCU.	B

Model: Model-J CF	Date: 31-Jul-03	No.: RG570007
-------------------	-----------------	---------------

SC 802 (CF)	Startup without video output end error (M)	Video transfer to the engine is started, but the engine does not issue a video transmission end command within the specified time.	<ul style="list-style-type: none"> Defective BCU 		<ol style="list-style-type: none"> Turn the main switch off and on. Check the cable connection. Replace the BCU. 	B
SC 803 (CF)	Startup without video output end error (C)	Video transfer to the engine is started, but the engine does not issue a video transmission end command within the specified time.	<ul style="list-style-type: none"> Defective BCU 		<ol style="list-style-type: none"> Turn the main switch off and on. Check the cable connection. Replace the BCU. 	B

Page 4-42

SC 991	Software Performance Error - Logged	<p>The software performs an unexpected operation.</p> <p>Note: Unlike SC990, the software/machine continue to function without requiring any action.</p>	<ul style="list-style-type: none"> Incorrect program argument or other parameter Insufficient working memory 		This SC is not displayed on the LCD (logged only).	B
--------	-------------------------------------	---	--	--	--	---

Reissued: 30-Jul-03

Model: Model-J CF	Date: 15-Mar-02	No.: RG570003g
-------------------	-----------------	----------------

RTB Reissue

Subject: Firmware Modification		Prepared by: H. Someya	
From: 1st Tech. Support Sec. Service Support Dept.			
Classification:	<input type="checkbox"/> Troubleshooting	<input checked="" type="checkbox"/> Part information	<input type="checkbox"/> Action required
	<input type="checkbox"/> Mechanical	<input type="checkbox"/> Electrical	<input type="checkbox"/> Service manual revision
	<input type="checkbox"/> Paper path	<input type="checkbox"/> Transmit/receive	<input type="checkbox"/> Retrofit information
	<input type="checkbox"/> Other ()		

This bulletin explains the firmware modification history for the Model-J CF (details begin on page 2).

	Controller DIMM1	Controller DIMM 2		IPU	Operation Panel
Firmware Type	System, Copier Application, Netfile Application	Printer Application	Scanner Application	Scanner IPU	LCDC
Remarks					

RTB Revision List

Issue Date	Control Symbol	Revised contents
14-Mar-02	-	First edition
19-Jul-02	<<A>>	System: 1.07 → 1.08 Printer Application: 1.07 → 1.08 LCDC: 2.10 → 2.12
26-Jul-02	<>	Printer Application: 1.08 → 1.08.5 → 1.09
29-Aug-02	<<C>>	System: 1.08 → 1.09
01-Nov-02	<<D>>	System: 1.09 → 1.10 Printer Application: 1.09 → 1.11
31-Jan-03	<<E>>	Printer Application: 1.11 → 1.12
7-Feb-03	<<F>>	Scanner IPU 1.12 → 1.18 → 1.20
30-Jul-03	<<G>>	Printer Application: 1.12 → 1.13 → 1.14 Scanner Application: 1.03 → 1.06

Reissued: 30-Jul-03

Model: Model-J CF	Date: 15-Mar-02	No.: RG570003g
-------------------	-----------------	----------------

[Modification History]

1. System, Copy Application, Netfile Application Firmware

P/N	System Version	Check Sum	Contents of Modification	Cut-in Month
G5705388B	1.02	-	Firmware installed from the first mass production run.	December, 2001
G5705388C	1.05	-	<ul style="list-style-type: none"> Letterhead Mode has been added (see RTB #RG060006 for details). Date and time display format for Asia has been changed to that of Europe. SP7-904 [Print: Printer Gamma] has been deleted. SP7-807 [SC Jam Counter Clear] has been added. The following has been fixed: <ul style="list-style-type: none"> ※ The staple LED on the operation panel does not light at staple end condition. 	January, 2002
G5706688	1.07	0CC4	<ul style="list-style-type: none"> The meter click counter specification has been changed so that copies made in SP mode are not counted up. With this modification, SC999 is detected when updating the engine main firmware from ver1.15E or older to 1.07 or later (see RTB #RG570002 for details). A grid pattern has been added to SP mode copy images. To activate this, it is necessary to use system firmware ver1.07 or newer. Specification changed so that the red LED for the printer application key top lights up when an alert condition is detected (e.g. fusing/oil supply unit near end). Just as with the G060 printer, the LED lighting conditions depend on the setting of SP5-930-3. RMS is supported with the use of the customized controller (field monitoring machines only). The following have been fixed: <ul style="list-style-type: none"> ※ The Punch Counter counts up by 2 for every sheet punched when using the function in Duplex Mode. ※ Executing system settings reset does not clear the password settings for stored documents or change the setting for Auto-off (energy saver 2) back to default. ※ Printed sheets are fed out to shift tray 2 of the finisher in punch/staple mode. ※ Centering problem when printing onto 12" x 18" paper. 	March, 2002
G5706688A <<A>>	1.08	0E02	<ul style="list-style-type: none"> The following have been fixed: <ul style="list-style-type: none"> ※ When scanning originals in color mode, the machine freezes if the HDD is in the near-full condition and the scanned data is saved in JPEG format. <p>"8 1/4 x 14 SEF" is displayed when the machine detects 8 1/2 x 14 SEF.</p>	May, 2002

Reissued: 30-Jul-03

Model: Model-J CF	Date: 15-Mar-02	No.: RG570003g
-------------------	-----------------	----------------

P/N	System Version	Check Sum	Contents of Modification	Cut-in Month
G5706688C <<C>>	1.09	A548	<ul style="list-style-type: none"> Files stored on the Document Server using fax or scan mode can be moved or copied using DeskTopBinder. 	August, 2002
G5706688D <<D>>	1.10	24E9	<ul style="list-style-type: none"> New SP mode added: SP3-922 (see engine main firmware version B1.21 for details). 	September, 2002

2. Printer Application Firmware

P/N	Version	Check Sum	Contents of Modification	Cut-in Month
G5705391B	1.02	-	Firmware installed from the first mass production run.	December, 2001
G5705391C	1.05	-	<ul style="list-style-type: none"> The following has been fixed: Paper is not punched at the designated position in Series Print mode (see RTB RGene010 for details on Series Print mode). 	January, 2002
G5705391D	1.06	-	<ul style="list-style-type: none"> The following has been fixed: While downloading PS fonts to a machine with the HDD option installed, the correct PS serial number cannot be output. 	February, 2002
G5705391E	1.07	2EB8	<ul style="list-style-type: none"> Euro fonts PC858, ISO8859-15, L9, PS Math and MC Text are now supported. PS performance improvement. The followings have been fixed: <ul style="list-style-type: none"> ※ When the undefined command, "<ESC>&k#w", is received, it appears on the output as a character string [e.g. as "<ESC>&k6w"]. ※ If Job Reset is selected while the first page of a multiple-page document is being processed, the panel continues to display "Printing". ※ AutoContinue timer bug. 	March, 2002
G5705391F <<A>>	1.08	972E	<ul style="list-style-type: none"> The following have been fixed: <ul style="list-style-type: none"> ※ The panel indicates an Offline status when recovering from Energy Saver mode. ※ The software allows a password of less than 4 characters to be set for Locked Printing. ※ The panel freezes when the following is performed: <ol style="list-style-type: none"> Several tabs are accessed in User Tools – Printer Features. Bypass Paper Size is selected in the Paper Input tab and the custom paper size is set. ※ The panel freezes when a punch error occurs in Series Print mode. ※ Certain characters do not print (GFPR #RC02010008). Change in Specification: 	May, 2002

Reissued: 30-Jul-03

Model: Model-J CF	Date: 15-Mar-02	No.: RG570003g
-------------------	-----------------	----------------

P/N	Version	Check Sum	Contents of Modification	Cut-in Month
			<ul style="list-style-type: none"> ※ The icon for Letterhead with duplex on the initial display for Copier mode has been changed to match that of the other paper icons. ※ PCL <ul style="list-style-type: none"> - Modified so that all characters in symbol sets MS Text and Windows Baltic (19L) print out the same as with HP. - When the HDD option is not installed, the PCL HDD Directory List and Font Source sections will not appear on the PCL Configuration Page. ※ PS <ul style="list-style-type: none"> - The black dither will not be used with the DeviceGray command. 	
G5705391G <>	1.08.5	FD19	<ul style="list-style-type: none"> • Counter values displayed on the configuration sheet for "Pages Printed" have been changed as follows: <ul style="list-style-type: none"> ※ SP7-003-01 [-20 / -21] → SP7-003-01 [-30 / -23]. • The following have been fixed: <ul style="list-style-type: none"> ※ PCL <ul style="list-style-type: none"> - Modified the dither size for when the UDFP command is used (GFPR# RE02030021) ※ PS <ul style="list-style-type: none"> - The margin for Custom size has been changed from 12 to 11 points to expand the maximum printing area. - Modified the dither setting for when the DeviceGray command is used. • Change in Specification: Supports the Status Readback function of the PCL5e. 	June, 2002
G5705391H <>	1.09	9809	<ul style="list-style-type: none"> • The following has been fixed: <ul style="list-style-type: none"> ※ The printing speed of a PS job slows down after a PS3 job is reset. 	July, 2002

Reissued: 30-Jul-03

Model: Model-J CF	Date: 15-Mar-02	No.: RG570003g
-------------------	-----------------	----------------

P/N	Version	Check Sum	Contents of Modification	Cut-in Month
G5705391J <<D>>	1.11	C775	<ul style="list-style-type: none"> • Counter values displayed on the configuration sheet for "Pages Printed" have been changed as follows for when Meter Click Charge mode is on and development count method has been selected: SP7-003-01 [-30 / -23] → SP7-003-01 [-20 / -21] • It does not go Online when the time setting is changed greatly on the operation panel. • When paper size error occurs using PCL printing, the printer error message of SNM for Client is not displayed on the PC. • The following have been fixed: <ul style="list-style-type: none"> ※ Toner near end alert of the replaced toner doesn't disappear even if one of the toner cartridges is replaced when more than one toner are toner near end condition. ※ PCL <ul style="list-style-type: none"> - Euro font does not print correctly. - Line Spacing Command, "Esc&l#D", causes incorrect output.(GFPR# RC02050002) - Slow Printing from AutoCAD.(GFPR# RC02070001) ※ PS <ul style="list-style-type: none"> - Euro symbol is not printed.(GFPR# RC02040005) Please refer to RTB #RGENE011 which will be issued soon, for the procedure of how to fix this issue. - PS print file is printed as text.(GFPR# RE02040013) 	October, 2002

Reissued: 30-Jul-03

Model: Model-J CF	Date: 15-Mar-02	No.: RG570003g
-------------------	-----------------	----------------

P/N	Version	Check Sum	Contents of Modification	Cut-in Month
G5705391K <<E>>	1.12	EE00	<ul style="list-style-type: none"> • The following have been fixed: <ul style="list-style-type: none"> ※ After using User Tool on operation panel, PCL print jobs may keep showing "Printing..." on operation panel. ※ Form Lines value (under PCL Menu) change after reboot the Machine. (GFPR# RA02090003) ※ PCL <ul style="list-style-type: none"> - Response to PJI INFO CONFIG command does not include serial number. - The print may stop during the processing of the file when using "INFICO". (GFPR# RE02090012) - The work area of RAM is reduced whenever fonts that have been downloaded to HDD are used. ※ PS <ul style="list-style-type: none"> - 16bit color blend data does not print correctly. (TechMail#RE0200414) - Slow Printing from AutoCAD. (GFPR# RC02070001) - Printing may not work correctly when a protocol other than EtherTalk is used on Macintosh 8.x/9.x.(TechMail#UK020107) - The printer controller locks-up when printing from Unix Acrobat. - Lines may be printed on the blank of page. - The error log is not described in Configuration page when the punch error occurred. - When data is sent that outputs 3 hole punch to the European model (which supports 2&4 hole punch), output has 2 hole punch. (Now output has no punch). - Printing on envelope may not work correctly. ※ PJI <ul style="list-style-type: none"> - Response to PJI INFO CONFIG command does not include serial number. 	December, 2002

Reissued: 30-Jul-03

Model: Model-J CF	Date: 15-Mar-02	No.: RG570003g
-------------------	-----------------	----------------

P/N	Version	Check Sum	Contents of Modification	Cut-in Month
G5705391L <<G>>	1.13	-	<ul style="list-style-type: none"> • The following have been fixed: <ul style="list-style-type: none"> ※ PCL <ul style="list-style-type: none"> - The following problems with the CAD print file were fixed. <ol style="list-style-type: none"> 1) Modified the available pen number from 8 to 256 when BitSw #3-3 is ON. (GFPR# RE02030003) 2) The "null" character is ignored when it is included in HP/GL2 data. (GFPR# RE02050016) 3) The status flag for the bold selection command is refreshed when the bold selection command in the HP/GL2 data is selected. (GFPR# RE02050016) - Supports mixed binding orientations with duplex jobs using cover sheets. (GFPR# RC02080003) - When using the "PageLength" command, duplex printing does not work. (GFPR#RC02120014) -The downloaded PCL Barcode fonts are not printed correctly on the PCL font list. (GFPR#RC03010004) - The Barcodes are printed with a shift. (GFPR#RE03010016) - Selecting a HDD font may reduce available memory. - Support for SAP Barcode & OCR printing. ※ PS <ul style="list-style-type: none"> - A PS error occurs when an unknown media type is specified. (GFPR# RE03010003) - The default setting of mainframe System/Resolution is "1200 x 600dpi". 	-
G5705391M <<G>>	1.14	1BD2	<ul style="list-style-type: none"> • Change in specification <ul style="list-style-type: none"> - Changing Adobe PostScript 3 Logo in the PS config page to red. 	April, 2003

3. Scanner Application Firmware

P/N	Version	Check Sum	Contents of Modification	Cut-in Month
G5705386A	1.00	-	Firmware installed from the first mass production run.	December, 2001
G5705386B	1.03	DCB6	<ul style="list-style-type: none"> • The following has been fixed: <ul style="list-style-type: none"> ※ PP mode software bug 	January, 2002
G5705386C <<G>>	1.06	F1BB	<ul style="list-style-type: none"> • The following bug is fixed. <ul style="list-style-type: none"> ※ SC990 will occur when scanning from the TWAIN driver and the defined document 	July, 2002

Reissued: 30-Jul-03

Model: Model-J CF	Date: 15-Mar-02	No.: RG570003g
-------------------	-----------------	----------------

P/N	Version	Check Sum	Contents of Modification	Cut-in Month
			<p><i>size in TWAIN is larger than the paper size that the ADF detected. An error message, "The length of the original exceeds limit." is displayed in the TWAIN driver U/I.</i></p> <p><i>e.g. Document size on TWAIN Driver: A3 Portrait (A3 SEF), ADF detected paper size: A4 SEF</i></p> <ul style="list-style-type: none"> ※ <i>When printing a job while scanning from the TWAIN driver, the scanning process is interrupted. An error message, "Scanner memory is in use for other function. Check the scanner." is displayed in the TWAIN driver U/I.</i> ※ <i>The scanner terminates connection and SC997 is displayed when the data load on the MFP is high, such as at the full condition for recovery delivery jobs or delivery requests, continuous memory transmissions, memory/substitute receptions of over 1000 pages, or when acting as a transfer station for over 1000 pages.</i> 	

4. Scanner IPU Firmware

P/N	Version	Check Sum	Contents of Modification	Cut-in Month
G5705350H	1.10	-	Firmware installed from the first mass production run.	December, 2001
G5705350J	1.12	507A	<ul style="list-style-type: none"> • Scanner software modified to effectively minimize variations in SBU board scanner controller output. • The following has been fixed: <ul style="list-style-type: none"> ※ A color misalignment appears when the full-page cover sheet and combine functions are selected. 	February, 2002
G5705350K <<F>>	1.18	EFE2	<ul style="list-style-type: none"> • Firmware modified for use with the next model. 	December, 2002
G5705350L <<F>>	1.20	A856	<ul style="list-style-type: none"> • The following has been fixed: <ul style="list-style-type: none"> * Shading correction error with ADF copies sometimes causes paleness or horizontal black or white bands. 	January, 2003

Reissued: 30-Jul-03

Model: Model-J CF	Date: 15-Mar-02	No.: RG570003g
-------------------	-----------------	----------------

5. LCDC Firmware

[For NA/Asia version]

P/N	Version	Check Sum	Contents of Modification	Cut-in Month
G5705426	2.10	2DFD	Firmware installed from the first mass production run.	December, 2001
G5705426A <<A>>	2.12	920A	<ul style="list-style-type: none"> • The following has been fixed: <ul style="list-style-type: none"> ※ Characters preceding a backslash appear as a “¥” on the User Program SMC report. 	May, 2002

[For EU version]

P/N	Version	Check Sum	Contents of Modification	Cut-in Month
G5705427	2.10	D529	Firmware installed from the first mass production run.	December, 2001
G5705427A <<A>>	2.12	878D	<ul style="list-style-type: none"> • The following have been fixed: <ul style="list-style-type: none"> ※ The key name for Sub TX Mode is displayed as “Sub RX Mode” on the LCD if Spanish is selected. ※ Characters preceding a backslash appear as a “¥” on the User Program SMC report. 	May, 2002

Reissued: 27-Aug-03

Model: Model-J CF	Date: 15-Mar-02	No.: RG570003h
-------------------	-----------------	----------------

RTB Reissue

Subject: Firmware Modification		Prepared by: H. Someya	
From: 1st Tech. Support Sec. Service Support Dept.			
Classification:	<input type="checkbox"/> Troubleshooting	<input checked="" type="checkbox"/> Part information	<input type="checkbox"/> Action required
	<input type="checkbox"/> Mechanical	<input type="checkbox"/> Electrical	<input type="checkbox"/> Service manual revision
	<input type="checkbox"/> Paper path	<input type="checkbox"/> Transmit/receive	<input type="checkbox"/> Retrofit information
	<input type="checkbox"/> Other ()		

This bulletin explains the firmware modification history for the Model-J CF (details begin on page 2).

	Controller DIMM1	Controller DIMM 2			IPU	Operation Panel
Firmware Type	System, Copier Application, Netfile Application	Printer Application	Scanner Application	Fax Application	Scanner IPU	LCDC
Remarks						

RTB Revision List

Issue Date	Control Symbol	Revised contents
14-Mar-02	-	First edition
19-Jul-02	<<A>>	System: 1.07 → 1.08 Printer Application: 1.07 → 1.08 LCDC: 2.10 → 2.12
26-Jul-02	<>	Printer Application: 1.08 → 1.08.5 → 1.09
29-Aug-02	<<C>>	System: 1.08 → 1.09
01-Nov-02	<<D>>	System: 1.09 → 1.10 Printer Application: 1.09 → 1.11
31-Jan-03	<<E>>	Printer Application: 1.11 → 1.12
7-Feb-03	<<F>>	Scanner IPU 1.12 → 1.18 → 1.20
30-Jul-03	<<G>>	Printer Application: 1.12 → 1.13 → 1.14 Scanner Application: 1.03 → 1.06
27-Aug-03	<<H>>	Scanner IPU: 1.20 → 1.21

Reissued: 27-Aug-03

Model: Model-J CF	Date: 15-Mar-02	No.: RG570003h
-------------------	-----------------	----------------

[Modification History]

1. System, Copy Application, Netfile Application Firmware

P/N	System Version	Check Sum	Contents of Modification	Cut-in Month
G5705388B	1.02	-	Firmware installed from the first mass production run.	December, 2001
G5705388C	1.05	-	<ul style="list-style-type: none"> • Letterhead Mode has been added (see RTB #RG060006 for details). • Date and time display format for Asia has been changed to that of Europe. • SP7-904 [Print: Printer Gamma] has been deleted. • SP7-807 [SC Jam Counter Clear] has been added. • The following has been fixed: <ul style="list-style-type: none"> ※ The staple LED on the operation panel does not light at staple end condition. 	January, 2002
G5706688	1.07	0CC4	<ul style="list-style-type: none"> • The meter click counter specification has been changed so that copies made in SP mode are not counted up. With this modification, SC999 is detected when updating the engine main firmware from ver1.15E or older to 1.07 or later (see RTB #RG570002 for details). • A grid pattern has been added to SP mode copy images. To activate this, it is necessary to use system firmware ver1.07 or newer. • Specification changed so that the red LED for the printer application key top lights up when an alert condition is detected (e.g. fusing/oil supply unit near end). Just as with the G060 printer, the LED lighting conditions depend on the setting of SP5-930-3. • RMS is supported with the use of the customized controller (field monitoring machines only). • The following have been fixed: <ul style="list-style-type: none"> ※ The Punch Counter counts up by 2 for every sheet punched when using the function in Duplex Mode. ※ Executing system settings reset does not clear the password settings for stored documents or change the setting for Auto-off (energy saver 2) back to default. ※ Printed sheets are fed out to shift tray 2 of the finisher in punch/staple mode. ※ Centering problem when printing onto 12" x 18" paper. 	March, 2002
G5706688A <<A>>	1.08	0E02	<ul style="list-style-type: none"> • The following have been fixed: <ul style="list-style-type: none"> ※ When scanning originals in color mode, the machine freezes if the HDD is in the near-full condition and the scanned data is saved in JPEG format. <p>"8 1/4 x 14 SEF" is displayed when the machine detects 8 1/2 x 14 SEF.</p>	May, 2002

Reissued: 27-Aug-03

Model: Model-J CF	Date: 15-Mar-02	No.: RG570003h
-------------------	-----------------	----------------

P/N	System Version	Check Sum	Contents of Modification	Cut-in Month
G5706688C <<C>>	1.09	A548	<ul style="list-style-type: none"> Files stored on the Document Server using fax or scan mode can be moved or copied using DeskTopBinder. 	August, 2002
G5706688D <<D>>	1.10	24E9	<ul style="list-style-type: none"> New SP mode added: SP3-922 (see engine main firmware version B1.21 for details). 	September, 2002

2. Printer Application Firmware

P/N	Version	Check Sum	Contents of Modification	Cut-in Month
G5705391B	1.02	-	Firmware installed from the first mass production run.	December, 2001
G5705391C	1.05	-	<ul style="list-style-type: none"> The following has been fixed: Paper is not punched at the designated position in Series Print mode (see RTB RGene010 for details on Series Print mode). 	January, 2002
G5705391D	1.06	-	<ul style="list-style-type: none"> The following has been fixed: While downloading PS fonts to a machine with the HDD option installed, the correct PS serial number cannot be output. 	February, 2002
G5705391E	1.07	2EB8	<ul style="list-style-type: none"> Euro fonts PC858, ISO8859-15, L9, PS Math and MC Text are now supported. PS performance improvement. The followings have been fixed: <ul style="list-style-type: none"> ※ When the undefined command, "<ESC>&k#w", is received, it appears on the output as a character string [e.g. as "<ESC>&k6w"]. ※ If Job Reset is selected while the first page of a multiple-page document is being processed, the panel continues to display "Printing". ※ AutoContinue timer bug. 	March, 2002
G5705391F <<A>>	1.08	972E	<ul style="list-style-type: none"> The following have been fixed: <ul style="list-style-type: none"> ※ The panel indicates an Offline status when recovering from Energy Saver mode. ※ The software allows a password of less than 4 characters to be set for Locked Printing. ※ The panel freezes when the following is performed: <ol style="list-style-type: none"> Several tabs are accessed in User Tools – Printer Features. Bypass Paper Size is selected in the Paper Input tab and the custom paper size is set. ※ The panel freezes when a punch error occurs in Series Print mode. ※ Certain characters do not print (GFPR #RC02010008). Change in Specification: 	May, 2002

Reissued: 27-Aug-03

Model: Model-J CF	Date: 15-Mar-02	No.: RG570003h
-------------------	-----------------	----------------

P/N	Version	Check Sum	Contents of Modification	Cut-in Month
			<ul style="list-style-type: none"> ※ The icon for Letterhead with duplex on the initial display for Copier mode has been changed to match that of the other paper icons. ※ PCL <ul style="list-style-type: none"> - Modified so that all characters in symbol sets MS Text and Windows Baltic (19L) print out the same as with HP. - When the HDD option is not installed, the PCL HDD Directory List and Font Source sections will not appear on the PCL Configuration Page. ※ PS <ul style="list-style-type: none"> - The black dither will not be used with the DeviceGray command. 	
G5705391G <>	1.08.5	FD19	<ul style="list-style-type: none"> • Counter values displayed on the configuration sheet for "Pages Printed" have been changed as follows: <ul style="list-style-type: none"> ※ SP7-003-01 [-20 / -21] → SP7-003-01 [-30 / -23]. • The following have been fixed: <ul style="list-style-type: none"> ※ PCL <ul style="list-style-type: none"> - Modified the dither size for when the UDFP command is used (GFPR# RE02030021) ※ PS <ul style="list-style-type: none"> - The margin for Custom size has been changed from 12 to 11 points to expand the maximum printing area. - Modified the dither setting for when the DeviceGray command is used. • Change in Specification: Supports the Status Readback function of the PCL5e. 	June, 2002
G5705391H <>	1.09	9809	<ul style="list-style-type: none"> • The following has been fixed: <ul style="list-style-type: none"> ※ The printing speed of a PS job slows down after a PS3 job is reset. 	July, 2002

Reissued: 27-Aug-03

Model: Model-J CF	Date: 15-Mar-02	No.: RG570003h
-------------------	-----------------	----------------

P/N	Version	Check Sum	Contents of Modification	Cut-in Month
G5705391J <<D>>	1.11	C775	<ul style="list-style-type: none">• Counter values displayed on the configuration sheet for "Pages Printed" have been changed as follows for when Meter Click Charge mode is on and development count method has been selected: SP7-003-01 [-30 / -23] → SP7-003-01 [-20 / -21]• It does not go Online when the time setting is changed greatly on the operation panel.• When paper size error occurs using PCL printing, the printer error message of SNM for Client is not displayed on the PC.• The following have been fixed:<ul style="list-style-type: none">※ Toner near end alert of the replaced toner doesn't disappear even if one of the toner cartridges is replaced when more than one toner are toner near end condition.※ PCL<ul style="list-style-type: none">- Euro font does not print correctly.- Line Spacing Command, "Esc&l#D", causes incorrect output.(GFPR# RC02050002)- Slow Printing from AutoCAD.(GFPR# RC02070001)※ PS<ul style="list-style-type: none">- Euro symbol is not printed.(GFPR# RC02040005) Please refer to RTB #RGENE011 which will be issued soon, for the procedure of how to fix this issue.- PS print file is printed as text.(GFPR# RE02040013)	October, 2002

Reissued: 27-Aug-03

Model: Model-J CF	Date: 15-Mar-02	No.: RG570003h
-------------------	-----------------	----------------

P/N	Version	Check Sum	Contents of Modification	Cut-in Month
G5705391K <<E>>	1.12	EE00	<ul style="list-style-type: none"> • The following have been fixed: <ul style="list-style-type: none"> ※ After using User Tool on operation panel, PCL print jobs may keep showing "Printing..." on operation panel. ※ Form Lines value (under PCL Menu) change after reboot the Machine. (GFPR# RA02090003) ※ PCL <ul style="list-style-type: none"> - Response to PJI INFO CONFIG command does not include serial number. - The print may stop during the processing of the file when using "INFICO". (GFPR# RE02090012) - The work area of RAM is reduced whenever fonts that have been downloaded to HDD are used. ※ PS <ul style="list-style-type: none"> - 16bit color blend data does not print correctly. (TechMail#RE0200414) - Slow Printing from AutoCAD. (GFPR# RC02070001) - Printing may not work correctly when a protocol other than EtherTalk is used on Macintosh 8.x/9.x.(TechMail#UK020107) - The printer controller locks-up when printing from Unix Acrobat. - Lines may be printed on the blank of page. - The error log is not described in Configuration page when the punch error occurred. - When data is sent that outputs 3 hole punch to the European model (which supports 2&4 hole punch), output has 2 hole punch. (Now output has no punch). - Printing on envelope may not work correctly. ※ PJI <ul style="list-style-type: none"> - Response to PJI INFO CONFIG command does not include serial number. 	December, 2002

Reissued: 27-Aug-03

Model: Model-J CF	Date: 15-Mar-02	No.: RG570003h
-------------------	-----------------	----------------

P/N	Version	Check Sum	Contents of Modification	Cut-in Month
G5705391L <<G>>	1.13	-	<ul style="list-style-type: none"> • The following have been fixed: <ul style="list-style-type: none"> ※ PCL <ul style="list-style-type: none"> - The following problems with the CAD print file were fixed. <ol style="list-style-type: none"> 1) Modified the available pen number from 8 to 256 when BitSw #3-3 is ON. (GFPR# RE02030003) 2) The "null" character is ignored when it is included in HP/GL2 data. (GFPR# RE02050016) 3) The status flag for the bold selection command is refreshed when the bold selection command in HP/GL2 data is selected. (GFPR# RE02050016) - Supports mixed binding orientations with duplex jobs using cover sheets. (GFPR# RC02080003) - When using the "PageLength" command, duplex print does not work. (GFPR#RC02120014) -The downloaded PCL Barcode fonts are not printed correctly on the PCL font list. (GFPR#RC03010004) - The Barcodes are printed with shift. (GFPR#RE03010016) - Selecting HDD font may reduce available memory. - Supported SAP Barcode & OCR printing. ※ PS <ul style="list-style-type: none"> - PS error occurs when unknown media type is specified. (GFPR# RE03010003) - The default setting of mainframe System/Resolution is "1200 x 600dpi". 	-
G5705391M <<G>>	1.14	1BD2	<ul style="list-style-type: none"> • Change in specification <ul style="list-style-type: none"> - Changing Adobe PostScript 3 Logo in PS config page to red. 	April, 2003

3. Scanner Application Firmware

P/N	Version	Check Sum	Contents of Modification	Cut-in Month
G5705386A	1.00	-	Firmware installed from the first mass production run.	December, 2001
G5705386B	1.03	DCB6	<ul style="list-style-type: none"> • The following has been fixed: <ul style="list-style-type: none"> ※ PP mode software bug 	January, 2002
G5705386C <<G>>	1.06	F1BB	<ul style="list-style-type: none"> • The following bug is fixed. <ul style="list-style-type: none"> ※ SC990 will occur when scanning from the TWAIN driver and the defined document size on 	July, 2002

Reissued: 27-Aug-03

Model: Model-J CF	Date: 15-Mar-02	No.: RG570003h
-------------------	-----------------	----------------

P/N	Version	Check Sum	Contents of Modification	Cut-in Month
			<p>TWAIN is larger than the paper size that the ADF detected. An error message, "The length of the original exceeds limit." is displayed in the TWAIN driver U/I. e.g. Document size on TWAIN Driver: A3 Portrait (A3 SEF), ADF detected paper size: A4 SEF</p> <ul style="list-style-type: none"> ※ When printing a job while scanning from the TWAIN driver, the scanning process is interrupted. An error message, "Scanner memory is in use for other function. Check the scanner." is displayed in the TWAIN driver U/I. ※ Scanner terminates connection and SC997 is displayed when the data load on the MFP is high, such as at the full condition for recovery delivery jobs or delivery requests, continuous memory transmissions, memory/substitute receptions of over 1000 pages, or transfer station for over 1000 pages. 	

4. Fax Application Firmware

P/N	System Version	Check Sum	Contents of Modification	Cut-in Month
G5705387A	1.00	13D4	Firmware installed from the first mass production run.	December, 2001

5. Scanner IPU Firmware

P/N	Version	Check Sum	Contents of Modification	Cut-in Month
G5705350H	1.10	-	Firmware installed from the first mass production run.	December, 2001
G5705350J	1.12	507A	<ul style="list-style-type: none"> • Scanner software modified to effectively minimize variations in SBU board scanner controller output. • The following has been fixed: <ul style="list-style-type: none"> ※ A color misalignment appears when the full-page cover sheet and combine functions are selected. 	February, 2002

Reissued: 27-Aug-03

Model: Model-J CF	Date: 15-Mar-02	No.: RG570003h
-------------------	-----------------	----------------

P/N	Version	Check Sum	Contents of Modification	Cut-in Month
G5705350K <<F>>	1.18	EFE2	<ul style="list-style-type: none"> Firmware modified for use with the next model. 	December, 2002
G5705350L <<F>>	1.20	A856	<ul style="list-style-type: none"> The following has been fixed: <ul style="list-style-type: none"> * Shading correction error with ADF copies sometimes causes paleness or horizontal black or white bands. 	January, 2003
G5705350M <<H>>	1.21	AAA2	The filter coefficient for text/photo separation has been changed in text mode.	March, 2003

6. LCDC Firmware

[For NA/Asia version]

P/N	Version	Check Sum	Contents of Modification	Cut-in Month
G5705426	2.10	2DFD	Firmware installed from the first mass production run.	December, 2001
G5705426A <<A>>	2.12	920A	<ul style="list-style-type: none"> The following has been fixed: <ul style="list-style-type: none"> ※ Characters preceding a backslash appear as a “¥” on the User Program SMC report. 	May, 2002

[For EU version]

P/N	Version	Check Sum	Contents of Modification	Cut-in Month
G5705427	2.10	D529	Firmware installed from the first mass production run.	December, 2001
G5705427A <<A>>	2.12	878D	<ul style="list-style-type: none"> The following have been fixed: <ul style="list-style-type: none"> ※ The key name for Sub TX Mode is displayed as “Sub RX Mode” on the LCD if Spanish is selected. ※ Characters preceding a backslash appear as a “¥” on the User Program SMC report. 	May, 2002

Model: Model-J CF	Date: 29-Aug-03	No.: RG570008
-------------------	-----------------	---------------

Number Correction

This is a reissue RTB Number RG307001 was numbered incorrectly.

Subject: Firmware Modification		Prepared by: H. Someya	
From: 1st Tech. Support Sec. Service Support Dept.			
Classification:	<input type="checkbox"/> Troubleshooting	<input checked="" type="checkbox"/> Part information	<input type="checkbox"/> Action required
	<input type="checkbox"/> Mechanical	<input type="checkbox"/> Electrical	<input type="checkbox"/> Service manual revision
	<input type="checkbox"/> Paper path	<input type="checkbox"/> Transmit/receive	<input type="checkbox"/> Retrofit information
	<input type="checkbox"/> Other ()		

This bulletin explains the firmware modification history for the Model-J CF fax unit (details begin on page 2).

	FCU (MBU)
Firmware Type	Fax FCU
Remarks	

RTB Revision List

Issue Date	Control Symbol	Revised contents
20-Mar-02	-	First edition
29-Aug-03	<<A>>	3.00.02 -> 4.00.00

Model: Model-J CF	Date: 20-Mar-02	No.: RG570008
-------------------	-----------------	---------------

[Modification History]

[For NA version]

P/N	Version	Check Sum	Contents of Modification	Cut-in Month									
G3075771B	2.00.04	8EAD	Firmware installed from the first mass production run.	December, 2001									
G3075771C	3.00.02	6FFB	<ul style="list-style-type: none"> • The following have been fixed: <ul style="list-style-type: none"> ※ The AI tone is sent 1db higher than the value set in the modem. ※ The machine sometimes freezes if the operator attempts to cancel the printing out of a report containing image data. ※ If communication is interrupted (ECM disabled) while the machine is receiving MMR compressed data, the machine prints out blank sheets or no sheets at all. ※ Even when paper is reloaded following paper end during the printout of the power failure report, the machine does not continue printing and the job is cancelled. ※ If the Printing Numbers have been set for reception mode or special sender and Transfer Request is enabled, the machine will print out the programmed number of sheets in addition to transferring the data to the proper destination. 	February, 2002									
G3075771D <<A>>	4.00.00	672A	<ul style="list-style-type: none"> • The following have been fixed: <ul style="list-style-type: none"> ※ Broadcasting sometimes fails when sending through PCFax. ※ Memory transmission sometimes fails following repetition of On-hook → # reg → Off-hook. • The following bit switch has been added: <table border="1" style="width: 100%; border-collapse: collapse;"> <thead> <tr> <th colspan="3">System Switch 19</th> </tr> <tr> <th>No</th> <th>FUNCTION</th> <th>COMMENTS</th> </tr> </thead> <tbody> <tr> <td style="text-align: center;">4</td> <td>Number of jobs controlled for PC-FAX TX 0: 64 Jobs 1: No limitations (but conforms to device limitations)</td> <td>Sets the number of jobs controlled for PC-FAX transactions. If "1" is selected (no limitations), control is relinquished to the device (standard 400, expandable to 800).</td> </tr> </tbody> </table> 	System Switch 19			No	FUNCTION	COMMENTS	4	Number of jobs controlled for PC-FAX TX 0: 64 Jobs 1: No limitations (but conforms to device limitations)	Sets the number of jobs controlled for PC-FAX transactions. If "1" is selected (no limitations), control is relinquished to the device (standard 400, expandable to 800).	October, 2002
System Switch 19													
No	FUNCTION	COMMENTS											
4	Number of jobs controlled for PC-FAX TX 0: 64 Jobs 1: No limitations (but conforms to device limitations)	Sets the number of jobs controlled for PC-FAX transactions. If "1" is selected (no limitations), control is relinquished to the device (standard 400, expandable to 800).											

Model: Model-J CF	Date: 20-Mar-02	No.: RG570008
-------------------	-----------------	---------------

[For EU/Asia version]

P/N	Version	Check Sum	Contents of Modification	Cut-in Month
G5705772B	2.00.04	2F10	Firmware installed from the first mass production run.	December, 2001
G5705772C	3.00.02	EC27	Same as NA version 3.00.02.	February, 2002
G5705772D <<A>>	4.00.00	C672	Same as NA version 4.00.00.	October, 2002

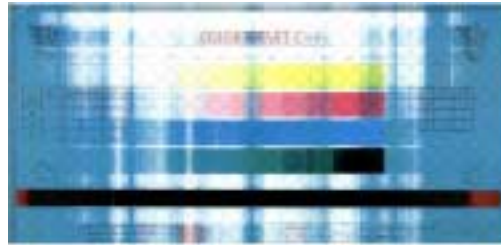
Model: Model-J CF		Date: 25-Mar-04	No.: RG570009
Subject: SC142 due to defective CCD		Prepared by: H.Taguchi	
From: 1st Tech. Support Sec. Service Support Dept.			
Classification:	<input checked="" type="checkbox"/> Troubleshooting	<input type="checkbox"/> Part information	<input type="checkbox"/> Action required
	<input type="checkbox"/> Mechanical	<input type="checkbox"/> Electrical	<input type="checkbox"/> Service manual revision
	<input type="checkbox"/> Paper path	<input type="checkbox"/> Transmit/receive	<input checked="" type="checkbox"/> Retrofit information
	<input type="checkbox"/> Other ()		



1. SYMPTOM

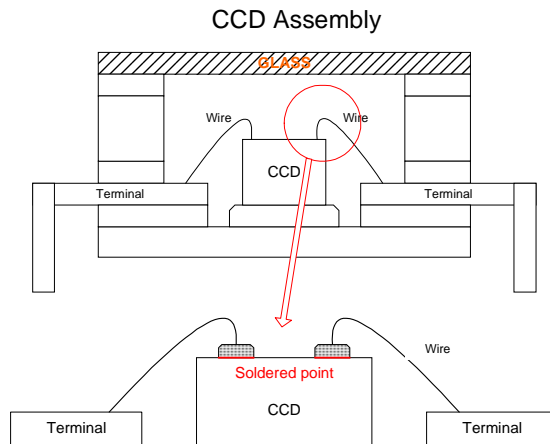
The following symptoms may occur intermittently or continuously.

- SC142 (White Level Detection Error)
- SC101 (Exposure Lamp Error)
- Colored vertical lines/bands/background (see photo).



2. CAUSE

The adhesive used to attach the glass to the CCD assembly was changed. However, it generated a gas when exposed to the heat from the PCB during machine operation. The gas caused the soldered points of wires on the CCD to oxidize and deteriorate, resulting in poor contact.



Model: Model-J CF	Date: 25-Mar-04	No.: RG570009
-------------------	-----------------	---------------

3. SOLUTION

The adhesive has been changed back to the original type.

4. AFFECTED UNITS

Affected units: From August 2002 to October 2003 production.

Product Code	First Serial Number	Last Serial Number
G570	17	P 6720900001
	26	4 H 20920001
	27	P 6720800510
	29	P 6720800616
G367	17	P 9830100001
	26	8Q50230001
	27	P 9830100021
	29	P 9830201231

5. ACTION IN THE FIELD

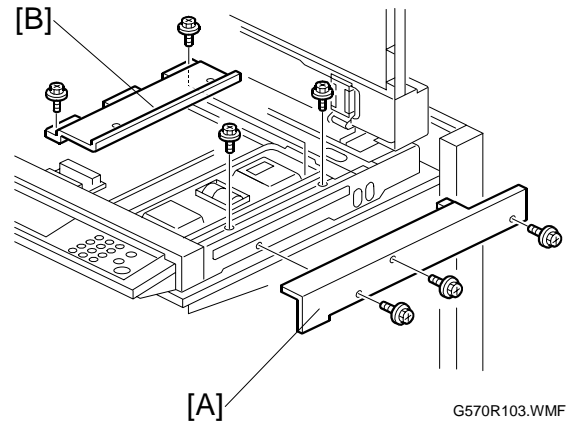
Retrofit parts (lens block assemblies) will be provided to the field FOC for all affected units. Therefore, at the next service visit or when the issue is reported, please replace with P/N B1169455.

Note:

- This retrofit part is the same part as normal service parts P/N G5702930.
- The replacement procedure appears on the following page.
- If SC101 or SC142 should recur after installing the new lens block assembly, please check the xenon lamp (referring to MB #MG570005 and #MG367001) and replace this part if necessary.

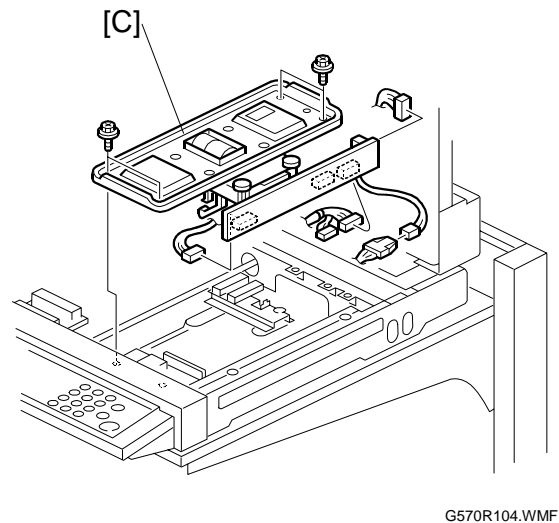
Lens Block Assembly Replacement Procedure

1. Open the ARDF/platen cover
2. Exposure glass
3. Rear cover
4. Right cover [A] (⚙ x 3)
5. Inner cover [B] (⚙ x 4)



6. Lens block assembly (Sensor board unit) [C] (⚙ x 4, 🛠 x 4)

Note: Do not remove the paint-locked screws.



7. After replacing the lens block assembly (Sensor board unit), adjust the following SP modes according to the scanner adjustment procedure on the following page.
 - SP4-008 (Scanner leading edge magnification)
 - SP4-010 (Scanner leading edge registration)
 - SP4-011 (Scanner side-to-side registration)

NOTE: The settings above are stored in the NVRAM on the lens block assembly.

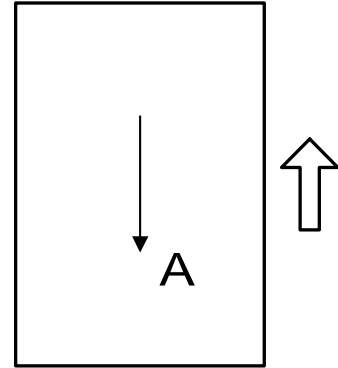
Model: Model-J CF	Date: 25-Mar-04	No.: RG570009
-------------------	-----------------	---------------

Scanner Adjustment Procedure

Note: Use a C4 test chart to perform the following adjustments.

Scanner sub-scan magnification

1. Place the test chart on the exposure glass and make a copy from one of the feed stations.
2. Check the magnification ratio. Use SP4-008 to adjust if necessary.
Standard: $\pm 1.0\%$.

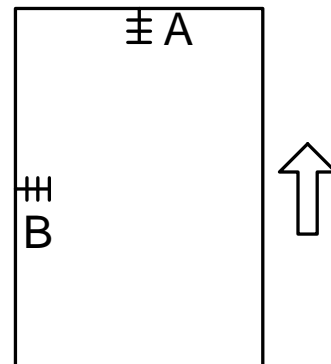


A: Sub-scan magnification
G570R910.WMF

Scanner leading edge and side-to-side registration

1. Place the test chart on the exposure glass and make a copy from one of the feed stations.
2. Check the leading edge and side-to-side registration, and adjust them with the following SP modes if necessary.
Standard: $0 \pm 2\text{mm}$.

	SP mode
Sub-scan	SP4-010
Main-scan	SP4-011



G570R908.WMF

A: Leading Edge Registration
B: Side-to-side Registration

Model: Model-J CF	Date: 25-Mar-04	No.: RG570009
-------------------	-----------------	---------------

REMARKS

- To distinguish the old/new lens block assemblies, modified retrofit (B1169455) and normal service parts (G5702930) contain a white mark in the area shown in the photo below. However, assemblies from approximately the second-month lots to February do not contain this mark. In such cases, **please mark the lens block assembly in the area shown below with a permanent marker at the next service visit.**



Production Cut-in Serial Numbers

The modification itself has been applied from the S/N shown below.

Product Code		Modification From: (MB #MG570004, MG367002)
G570	17	P67311xxxxx
	26	4H2113xxxxx
	27	P67311xxxxx
	29	P67311xxxxx
G367	17	P9831100001
	26	8Q51030001
	27	P9840100001
	29	P9831100015

Lot Numbers (service parts)

The modification has been applied to service parts from the following lot number, which appears on the unit's lot number seal.

Lot number: CF 0310 00007

Note: The number is read as follows.

CF XX ## %%%%

- CF: Prefix No.
- XX: Year (ex. 2004 → 04)
- ##: Month (November → 11)
- %%%: Number

Reissued: 30-Mar-04

Model: Model-J CF	Date: 15-Mar-02	No.: RG570003i
-------------------	-----------------	----------------

RTB Reissue

Subject: Firmware Modification		Prepared by: H.Taguchi	
From: 1st Tech. Support Sec. Service Support Dept.			
Classification:	<input type="checkbox"/> Troubleshooting	<input checked="" type="checkbox"/> Part information	<input type="checkbox"/> Action required
	<input type="checkbox"/> Mechanical	<input type="checkbox"/> Electrical	<input type="checkbox"/> Service manual revision
	<input type="checkbox"/> Paper path	<input type="checkbox"/> Transmit/receive	<input type="checkbox"/> Retrofit information
	<input type="checkbox"/> Other ()		

This bulletin explains the firmware modification history for the Model-J CF (details begin on page 2).

	Controller DIMM1	Controller DIMM 2			IPU	Operation Panel
Firmware Type	System, Copier Application, Netfile Application	Printer Application	Scanner Application	Fax Application	Scanner IPU	LCDC
Remarks						

RTB Revision List

Issue Date	Control Symbol	Revised contents
14-Mar-02	-	First edition
19-Jul-02	<<A>>	System: 1.07 → 1.08 Printer Application: 1.07 → 1.08 LCDC: 2.10 → 2.12
26-Jul-02	<>	Printer Application: 1.08 → 1.08.5 → 1.09
29-Aug-02	<<C>>	System: 1.08 → 1.09
01-Nov-02	<<D>>	System: 1.09 → 1.10 Printer Application: 1.09 → 1.11
31-Jan-03	<<E>>	Printer Application: 1.11 → 1.12
7-Feb-03	<<F>>	Scanner IPU 1.12 → 1.18 → 1.20
30-Jul-03	<<G>>	Printer Application: 1.12 → 1.13 → 1.14 Scanner Application: 1.03 → 1.06
27-Aug-03	<<H>>	Scanner IPU: 1.20 → 1.21
30-Mar-04	<<I>>	System: 1.10 → 1.11 Scanner IPU 1.21 → 1.22

Reissued: 27-Aug-03

Model: Model-J CF	Date: 15-Mar-02	No.: RG570003h
-------------------	-----------------	----------------

[Modification History]

1. System, Copy Application, Netfile Application Firmware

P/N	System Version	Check Sum	Contents of Modification	Cut-in Month
G5705388B	1.02	-	Firmware installed from the first mass production run.	December, 2001
G5705388C	1.05	-	<ul style="list-style-type: none"> • Letterhead Mode has been added (see RTB #RG060006 for details). • Date and time display format for Asia has been changed to that of Europe. • SP7-904 [Print: Printer Gamma] has been deleted. • SP7-807 [SC Jam Counter Clear] has been added. • The following has been fixed: <ul style="list-style-type: none"> ※ The staple LED on the operation panel does not light at staple end condition. 	January, 2002
G5706688	1.07	0CC4	<ul style="list-style-type: none"> • The meter click counter specification has been changed so that copies made in SP mode are not counted up. With this modification, SC999 is detected when updating the engine main firmware from ver1.15E or older to 1.07 or later (see RTB #RG570002 for details). • A grid pattern has been added to SP mode copy images. To activate this, it is necessary to use system firmware ver1.07 or newer. • Specification changed so that the red LED for the printer application key top lights up when an alert condition is detected (e.g. fusing/oil supply unit near end). Just as with the G060 printer, the LED lighting conditions depend on the setting of SP5-930-3. • RMS is supported with the use of the customized controller (field monitoring machines only). • The following have been fixed: <ul style="list-style-type: none"> ※ The Punch Counter counts up by 2 for every sheet punched when using the function in Duplex Mode. ※ Executing system settings reset does not clear the password settings for stored documents or change the setting for Auto-off (energy saver 2) back to default. ※ Printed sheets are fed out to shift tray 2 of the finisher in punch/staple mode. ※ Centering problem when printing onto 12" x 18" paper. 	March, 2002
G5706688A <<A>>	1.08	0E02	<ul style="list-style-type: none"> • The following have been fixed: <ul style="list-style-type: none"> ※ When scanning originals in color mode, the machine freezes if the HDD is in the near-full condition and the scanned data is saved in JPEG format. <p>"8 1/4 x 14 SEF" is displayed when the machine detects 8 1/2 x 14 SEF.</p>	May, 2002

Reissued: 27-Aug-03

Model: Model-J CF	Date: 15-Mar-02	No.: RG570003h
-------------------	-----------------	----------------

P/N	System Version	Check Sum	Contents of Modification	Cut-in Month
G5706688C <<C>>	1.09	A548	<ul style="list-style-type: none"> Files stored on the Document Server using fax or scan mode can be moved or copied using DeskTopBinder. 	August, 2002
G5706688D <<D>>	1.10	24E9	<ul style="list-style-type: none"> New SP mode added: SP3-922 (see engine main firmware version B1.21 for details). 	September, 2002
G5706688E <<I>>	1.11	9A7C	<ul style="list-style-type: none"> The following has been fixed. <ul style="list-style-type: none"> ※ When prints are made with Meter Click, B&W pages following color pages in ACS mode are also counted up as color developments. Specifically, the B&W development counter should only increment by 1 for a B&W page following a color page in the same ACS print job, but in addition to this, the color development counter is also incremented by 3. 	March, 2004

1. Printer Application Firmware

P/N	Version	Check Sum	Contents of Modification	Cut-in Month
G5705391B	1.02	-	Firmware installed from the first mass production run.	December, 2001
G5705391C	1.05	-	<ul style="list-style-type: none"> The following has been fixed: Paper is not punched at the designated position in Series Print mode (see RTB Rgene010 for details on Series Print mode). 	January, 2002
G5705391D	1.06	-	<ul style="list-style-type: none"> The following has been fixed: While downloading PS fonts to a machine with the HDD option installed, the correct PS serial number cannot be output. 	February, 2002
G5705391E	1.07	2EB8	<ul style="list-style-type: none"> Euro fonts PC858, ISO8859-15, L9, PS Math and MC Text are now supported. PS performance improvement. The followings have been fixed: <ul style="list-style-type: none"> ※ When the undefined command, "<ESC>&k#w", is received, it appears on the output as a character string [e.g. as "<ESC>&k6w"]. ※ If Job Reset is selected while the first page of a multiple-page document is being processed, the panel continues to display "Printing". ※ AutoContinue timer bug. 	March, 2002
G5705391F <<A>>	1.08	972E	<ul style="list-style-type: none"> The following have been fixed: <ul style="list-style-type: none"> ※ The panel indicates an Offline status when recovering from Energy Saver mode. ※ The software allows a password of less than 4 characters to be set for Locked Printing. ※ The panel freezes when the following is performed: 	May, 2002

Reissued: 27-Aug-03

Model: Model-J CF	Date: 15-Mar-02	No.: RG570003h
-------------------	-----------------	----------------

P/N	Version	Check Sum	Contents of Modification	Cut-in Month
			<ul style="list-style-type: none"> 1. Several tabs are accessed in User Tools – Printer Features. 1. Bypass Paper Size is selected in the Paper Input tab and the custom paper size is set. ※ The panel freezes when a punch error occurs in Series Print mode. ※ Certain characters do not print (GFPR #RC02010008). • Change in Specification: <ul style="list-style-type: none"> ※ The icon for Letterhead with duplex on the initial display for Copier mode has been changed to match that of the other paper icons. ※ PCL <ul style="list-style-type: none"> - Modified so that all characters in symbol sets MS Text and Windows Baltic (19L) print out the same as with HP. - When the HDD option is not installed, the PCL HDD Directory List and Font Source sections will not appear on the PCL Configuration Page. ※ PS <ul style="list-style-type: none"> - The black dither will not be used with the DeviceGray command. 	
G5705391G <>	1.08.5	FD19	<ul style="list-style-type: none"> • Counter values displayed on the configuration sheet for “Pages Printed” have been changed as follows: <ul style="list-style-type: none"> ※ SP7-003-01 [-20 / -21] → SP7-003-01 [-30 / -23]. • The following have been fixed: <ul style="list-style-type: none"> ※ PCL <ul style="list-style-type: none"> - Modified the dither size for when the UDFP command is used (GFPR# RE02030021) ※ PS <ul style="list-style-type: none"> - The margin for Custom size has been changed from 12 to 11 points to expand the maximum printing area. - Modified the dither setting for when the DeviceGray command is used. • Change in Specification: <ul style="list-style-type: none"> Supports the Status Readback function of the PCL5e. 	June, 2002
G5705391H <>	1.09	9809	<ul style="list-style-type: none"> • The following has been fixed: <ul style="list-style-type: none"> ※ The printing speed of a PS job slows down after a PS3 job is reset. 	July, 2002

Reissued: 27-Aug-03

Model: Model-J CF	Date: 15-Mar-02	No.: RG570003h
-------------------	-----------------	----------------

P/N	Version	Check Sum	Contents of Modification	Cut-in Month
G5705391J <<D>>	1.11	C775	<ul style="list-style-type: none"> • Counter values displayed on the configuration sheet for "Pages Printed" have been changed as follows for when Meter Click Charge mode is on and development count method has been selected: SP7-003-01 [-30 / -23] → SP7-003-01 [-20 / -21] • It does not go Online when the time setting is changed greatly on the operation panel. • When paper size error occurs using PCL printing, the printer error message of SNM for Client is not displayed on the PC. • The following have been fixed: <ul style="list-style-type: none"> ※ Toner near end alert of the replaced toner doesn't disappear even if one of the toner cartridges is replaced when more than one toner are toner near end condition. ※ PCL <ul style="list-style-type: none"> - Euro font does not print correctly. - Line Spacing Command, "Esc&l#D", causes incorrect output.(GFPR# RC02050002) - Slow Printing from AutoCAD.(GFPR# RC02070001) ※ PS <ul style="list-style-type: none"> - Euro symbol is not printed.(GFPR# RC02040005) Please refer to RTB #RGENE011 which will be issued soon, for the procedure of how to fix this issue. - PS print file is printed as text.(GFPR# RE02040013) 	October, 2002

Reissued: 27-Aug-03

Model: Model-J CF	Date: 15-Mar-02	No.: RG570003h
-------------------	-----------------	----------------

P/N	Version	Check Sum	Contents of Modification	Cut-in Month
G5705391K <<E>>	1.12	EE00	<ul style="list-style-type: none"> • The following have been fixed: <ul style="list-style-type: none"> ※ After using User Tool on operation panel, PCL print jobs may keep showing "Printing..." on operation panel. ※ Form Lines value (under PCL Menu) change after reboot the Machine. (GFPR# RA02090003) ※ PCL <ul style="list-style-type: none"> - Response to PJI INFO CONFIG command does not include serial number. - The print may stop during the processing of the file when using "INFICO". (GFPR# RE02090012) - The work area of RAM is reduced whenever fonts that have been downloaded to HDD are used. ※ PS <ul style="list-style-type: none"> - 16bit color blend data does not print correctly. (TechMail#RE0200414) - Slow Printing from AutoCAD. (GFPR# RC02070001) - Printing may not work correctly when a protocol other than EtherTalk is used on Macintosh 8.x/9.x.(TechMail#UK020107) - The printer controller locks-up when printing from Unix Acrobat. - Lines may be printed on the blank of page. - The error log is not described in Configuration page when the punch error occurred. - When data is sent that outputs 3 hole punch to the European model (which supports 2&4 hole punch), output has 2 hole punch. (Now output has no punch). - Printing on envelope may not work correctly. ※ PJI <ul style="list-style-type: none"> - Response to PJI INFO CONFIG command does not include serial number. 	December, 2002

Reissued: 27-Aug-03

Model: Model-J CF	Date: 15-Mar-02	No.: RG570003h
-------------------	-----------------	----------------

P/N	Version	Check Sum	Contents of Modification	Cut-in Month
G5705391L <<G>>	1.13	-	<ul style="list-style-type: none"> • The following have been fixed: <ul style="list-style-type: none"> ※ PCL <ul style="list-style-type: none"> - The following problems with the CAD print file were fixed. <ol style="list-style-type: none"> 1. Modified the available pen number from 8 to 256 when BitSw #3-3 is ON. (GFPR# RE02030003) 2) The "null" character is ignored when it is included in HP/GL2 data. (GFPR# RE02050016) 3) The status flag for the bold selection command is refreshed when the bold selection command in HP/GL2 data is selected. (GFPR# RE02050016) - Supports mixed binding orientations with duplex jobs using cover sheets. (GFPR# RC02080003) - When using the "PageLength" command, duplex print does not work. (GFPR#RC02120014) -The downloaded PCL Barcode fonts are not printed correctly on the PCL font list. (GFPR#RC03010004) - The Barcodes are printed with shift. (GFPR#RE03010016) - Selecting HDD font may reduce available memory. - Supported SAP Barcode & OCR printing. ※ PS <ul style="list-style-type: none"> - PS error occurs when unknown media type is specified. (GFPR# RE03010003) - The default setting of mainframe System/Resolution is "1200 x 600dpi". 	-
G5705391M <<G>>	1.14	1BD2	<ul style="list-style-type: none"> • Change in specification <ul style="list-style-type: none"> - Changing Adobe PostScript 3 Logo in PS config page to red. 	April, 2003

1. Scanner Application Firmware

P/N	Version	Check Sum	Contents of Modification	Cut-in Month
G5705386A	1.00	-	Firmware installed from the first mass production run.	December, 2001
G5705386B	1.03	DCB6	<ul style="list-style-type: none"> • The following has been fixed: <ul style="list-style-type: none"> ※ PP mode software bug 	January, 2002
G5705386C <<G>>	1.06	F1BB	<ul style="list-style-type: none"> • The following bug is fixed. <ul style="list-style-type: none"> ※ SC990 will occur when scanning from the TWAIN driver and the defined document size on 	July, 2002

Reissued: 27-Aug-03

Model: Model-J CF	Date: 15-Mar-02	No.: RG570003h
-------------------	-----------------	----------------

P/N	Version	Check Sum	Contents of Modification	Cut-in Month
			<p>TWAIN is larger than the paper size that the ADF detected. An error message, "The length of the original exceeds limit." Is displayed in the TWAIN driver U/I. e.g. Document size on TWAIN Driver: A3 Portrait (A3 SEF), ADF detected paper size: A4 SEF</p> <ul style="list-style-type: none"> ※ When printing a job while scanning from the TWAIN driver, the scanning process is interrupted. An error message, "Scanner memory is in use for other function. Check the scanner." Is displayed in the TWAIN driver U/I. ※ Scanner terminates connection and SC997 is displayed when the data load on the MFP is high, such as at the full condition for recovery delivery jobs or delivery requests, continuous memory transmissions, memory/substitute receptions of over 1000 pages, or transfer station for over 1000 pages. 	

4. Fax Application Firmware

P/N	System Version	Check Sum	Contents of Modification	Cut-in Month
G5705387A	1.00	13D4	Firmware installed from the first mass production run.	December, 2001

5. Scanner IPU Firmware

P/N	Version	Check Sum	Contents of Modification	Cut-in Month
G5705350H	1.10	-	Firmware installed from the first mass production run.	December, 2001
G5705350J	1.12	507A	<ul style="list-style-type: none"> • Scanner software modified to effectively minimize variations in SBU board scanner controller output. • The following has been fixed: <ul style="list-style-type: none"> ※ A color misalignment appears when the full-page cover sheet and combine functions are selected. 	February, 2002

Reissued: 27-Aug-03

Model: Model-J CF	Date: 15-Mar-02	No.: RG570003h
-------------------	-----------------	----------------

P/N	Version	Check Sum	Contents of Modification	Cut-in Month
G5705350K <<F>>	1.18	EFE2	<ul style="list-style-type: none"> Firmware modified for use with the next model. 	December, 2002
G5705350L <<F>>	1.20	A856	<ul style="list-style-type: none"> The following has been fixed: <ul style="list-style-type: none"> * Shading correction error with ADF copies sometimes causes paleness or horizontal black or white bands. 	January, 2003
G5705350M <<H>>	1.21	AAA2	The filter coefficient for text/photo separation has been changed in text mode.	March, 2003
G5705350N <<I>>	1.22	A85E	<i>The image quality in text/photo mode has been improved.</i>	March, 2004

6. LCDC Firmware

[For NA/Asia version]

P/N	Version	Check Sum	Contents of Modification	Cut-in Month
G5705426	2.10	2DFD	Firmware installed from the first mass production run.	December, 2001
G5705426A <<A>>	2.12	920A	<ul style="list-style-type: none"> The following has been fixed: <ul style="list-style-type: none"> ※ Characters preceding a backslash appear as a “¥” on the User Program SMC report. 	May, 2002

[For EU version]

P/N	Version	Check Sum	Contents of Modification	Cut-in Month
G5705427	2.10	D529	Firmware installed from the first mass production run.	December, 2001
G5705427A <<A>>	2.12	878D	<ul style="list-style-type: none"> The following have been fixed: <ul style="list-style-type: none"> ※ The key name for Sub TX Mode is displayed as “Sub RX Mode” on the LCD if Spanish is selected. ※ Characters preceding a backslash appear as a “¥” on the User Program SMC report. 	May, 2002

Reissued: 30-Apr-04

Model: Model -J CF	Date: 25-Mar-04	No.: RG570009a
--------------------	-----------------	----------------

RTB Correction

The items in ***bold italics*** have been corrected or added.

Subject: SC142 due to defective CCD		Prepared by: H.Taguchi	
From: 1st Tech. Support Sec. Service Support Dept.			
Classification:	<input checked="" type="checkbox"/> Troubleshooting	<input type="checkbox"/> Part information	<input type="checkbox"/> Action required
	<input type="checkbox"/> Mechanical	<input type="checkbox"/> Electrical	<input type="checkbox"/> Service manual revision
	<input type="checkbox"/> Paper path	<input type="checkbox"/> Transmit/receive	<input type="checkbox"/> Retrofit information
	<input type="checkbox"/> Other ()		

Step 7 on pg. 4 below, i.e. checking to make sure SP4-205 is at 70, is necessary due to a RAM data error with the retrofit lens block assemblies (#B1169455) discovered at the manufacturer's side. Specifically, one of the several special tools used by the manufacturer was defective, causing a limited amount of assembly RAMs to contain a value of 8 instead of the normal 70. Therefore, please ensure that this value is at 70 in Step 7 below, as dirty background in ADS mode may occur if this value is 8.

Please note that all boxes bearing the seal shown below contain lens block assemblies with the correct data (70).



Reissued: 30-Apr-04

Model: Model -J CF	Date: 25-Mar-04	No.: RG570009a
--------------------	-----------------	----------------

1. SYMPTOM

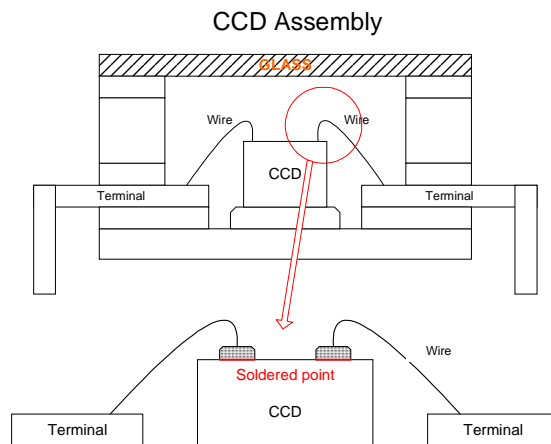
The following symptoms may occur intermittently or continuously.

- SC142 (White Level Detection Error)
- SC101 (Exposure Lamp Error)
- Colored vertical lines/bands/background (see the photo).



2. CAUSE

The adhesive used to attach the glass to the CCD assembly was changed, but it generated a gas when exposed to the heat from the PCB during machine operation. The gas caused the soldered points of wires on the CCD to oxidize and deteriorate, resulting in poor contact.



Reissued: 30-Apr-04

Model: Model –J CF	Date: 25-Mar-04	No.: RG570009a
--------------------	-----------------	----------------

3. SOLUTION

The adhesive has been changed back to the original type.

4. Affected Units

Affected units: From August 2002 to October 2003 production.

Product Code	First Serial Number	Last Serial Number	
G570	17	P 6720900001	P6730200340
	26	4 H 20920001	4H20330040
	27	P 6720800510	P673030211
	29	P 6720800616	P6730600001
G367	17	P 9830100001	P9830900253
	26	8Q50230001	8Q50930015
	27	P 9830100021	P9830900428
	29	P 9830201231	P9831000080

5. Action in the Field

Retrofit parts (lens block assemblies) will be provided to the field FOC for all affected units. Therefore, at the next service visit or when the issue is reported, please replace with P/N B1169455.

Note:

- This retrofit part is the same part as the normal service part P/N G5702930.
- The replacement procedure appears on the following page.
- If SC101 or SC142 should recur after installing the new lens block assembly, please check the xenon lamp (referring to MB #MG570005 and #MG367001) and replace this part if necessary.

Reissued: 30-Apr-04

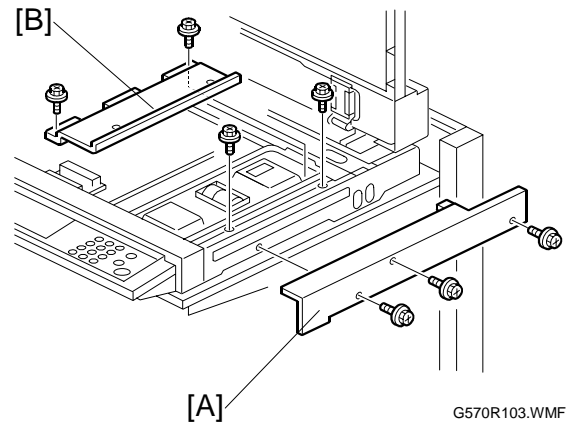
Model: Model –J CF

Date: 25-Mar-04

No.: RG570009a

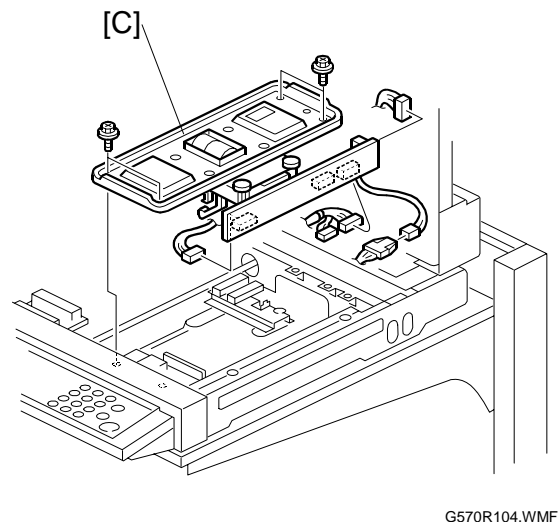
Lens Block Assembly Replacement Procedure

1. Open the ARDF/platen cover
2. Exposure glass
3. Rear cover
4. Right cover [A] (⚙ x 3)
5. Inner cover [B] (⚙ x 4)



6. Lens block assembly (Sensor board unit) [C] (⚙ x 4, ⚙ x 4)

Note: Do not remove the paint-locked screws.



7. After replacing the lens block assembly (Sensor board unit), **check that the current setting of SP4-205 (Black ADS Level) is at its default of 70.**

➤ ***If this SP is at a value of 8, this can cause incorrect background detection in ADS mode and lead to dirty background.***

8. Adjust the following SP modes according to the following scanner adjustment procedure.
 - SP4-008 (Scanner leading edge magnification)
 - SP4-010 (Scanner leading edge registration)
 - SP4-011 (Scanner side-to-side registration)

NOTE: The settings above are stored in the NVRAM on the lens block assembly.

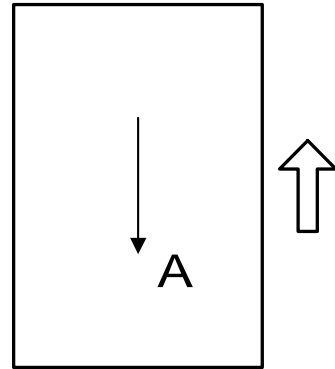
Model: Model –J CF	Date: 25-Mar-04	No.: RG570009a
--------------------	-----------------	----------------

Scanner Adjustment Procedure

Note: Use a C4 test chart to perform the following adjustments.

Scanner sub-scan magnification

1. Place the test chart on the exposure glass and make a copy from one of the feed stations.
2. Check the magnification ratio. Use SP4-008 to adjust if necessary.
Standard: $\pm 1.0\%$.

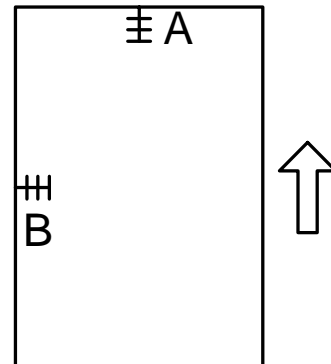


A: Sub-scan magnification
G570R910.WMF

Scanner leading edge and side-to-side registration

1. Place the test chart on the exposure glass and make a copy from one of the feed stations.
2. Check the leading edge and side-to-side registration, and adjust them with the following SP modes if necessary.
Standard: $0 \pm 2\text{mm}$.

	SP mode
Sub-scan	SP4-010
Main-scan	SP4-011



G570R908.WMF

A: Leading Edge Registration
B: Side-to-side Registration

Reissued: 30-Apr-04

Model: Model -J CF	Date: 25-Mar-04	No.: RG570009a
--------------------	-----------------	----------------

REMARKS

- To distinguish the old/new lens block assemblies, modified retrofit (B1169455) and normal service parts (G5702930) contain a white mark in the area shown in the photo below. However, assemblies from approximately the second-month lots to February do not contain this mark. In such cases, **please mark the lens block assembly in the area shown below with a permanent marker at the next service visit.**



Production Cut-in Serial Numbers

The modification itself has been applied from the S/N shown below.

Product Code		Modification From: (MB #MG570004, MG367002)
G570	17	P67311xxxxx
	26	4H2113xxxxx
	27	P67311xxxxx
	29	P67311xxxxx
G367	17	P9831100001
	26	8Q51030001
	27	P9840100001
	29	P9831100015

Lot Numbers (service parts)

The modification has been applied to service parts from the following lot number, which appears on the unit's lot number seal.

Lot number: CF 0310 00007

Note: The number is read as follows.

CF XX ## %%%%

- CF: Prefix No.
- XX: Year (example: 2004 → 04)
- ##: Month (November → 11)
- %%%: Number

Reissued: 30-Jul-04

Model: Model-J CF	Date: 15-Mar-02	No.: RG570003j
-------------------	-----------------	----------------

RTB Reissue

Subject: Firmware Modification		Prepared by: H.Taguchi	
From: 1st Tech. Support Sec. Service Support Dept.			
Classification:	<input type="checkbox"/> Troubleshooting	<input checked="" type="checkbox"/> Part information	<input type="checkbox"/> Action required
	<input type="checkbox"/> Mechanical	<input type="checkbox"/> Electrical	<input type="checkbox"/> Service manual revision
	<input type="checkbox"/> Paper path	<input type="checkbox"/> Transmit/receive	<input type="checkbox"/> Retrofit information
	<input type="checkbox"/> Other ()		

This bulletin explains the firmware modification history for the Model-J CF (details begin on page 2).

	Controller DIMM1	Controller DIMM 2			IPU	Operation Panel
Firmware Type	System, Copier Application, Netfile Application	Printer Application	Scanner Application	Fax Application	Scanner IPU	LCDC
Remarks						

RTB Revision List

Issue Date	Control Symbol	Revised contents
14-Mar-02	-	First edition
19-Jul-02	<<A>>	System: 1.07 → 1.08 Printer Application: 1.07 → 1.08 LCDC: 2.10 → 2.12
26-Jul-02	<>	Printer Application: 1.08 → 1.08.5 → 1.09
29-Aug-02	<<C>>	System: 1.08 → 1.09
01-Nov-02	<<D>>	System: 1.09 → 1.10 Printer Application: 1.09 → 1.11
31-Jan-03	<<E>>	Printer Application: 1.11 → 1.12
7-Feb-03	<<F>>	Scanner IPU 1.12 → 1.18 → 1.20
30-Jul-03	<<G>>	Printer Application: 1.12 → 1.13 → 1.14 Scanner Application: 1.03 → 1.06
27-Aug-03	<<H>>	Scanner IPU: 1.20 → 1.21
30-Mar-04	<<I>>	System: 1.10 → 1.11 Scanner IPU 1.21 → 1.22
30-July-04	<<J>>	System: 1.11 → 1.12

Reissued: 30-Jul-04

Model: Model-J CF	Date: 15-Mar-02	No.: RG570003j
-------------------	-----------------	----------------

[Modification History]

1. System, Copy Application, Netfile Application Firmware

P/N	System Version	Check Sum	Contents of Modification	Cut-in Month
G5705388B	1.02	-	Firmware installed from the first mass production run.	December, 2001
G5705388C	1.05	-	<ul style="list-style-type: none"> • Letterhead Mode has been added (see RTB #RG060006 for details). • Date and time display format for Asia has been changed to that of Europe. • SP7-904 [Print: Printer Gamma] has been deleted. • SP7-807 [SC Jam Counter Clear] has been added. • The following has been fixed: <ul style="list-style-type: none"> ※ The staple LED on the operation panel does not light at staple end condition. 	January, 2002
G5706688	1.07	0CC4	<ul style="list-style-type: none"> • The meter click counter specification has been changed so that copies made in SP mode are not counted up. With this modification, SC999 is detected when updating the engine main firmware from ver1.15E or older to 1.07 or later (see RTB #RG570002 for details). • A grid pattern has been added to SP mode copy images. To activate this, it is necessary to use system firmware ver1.07 or newer. • Specification changed so that the red LED for the printer application key top lights up when an alert condition is detected (e.g. fusing/oil supply unit near end). Just as with the G060 printer, the LED lighting conditions depend on the setting of SP5-930-3. • RMS is supported with the use of the customized controller (field monitoring machines only). • The following have been fixed: <ul style="list-style-type: none"> ※ The Punch Counter counts up by 2 for every sheet punched when using the function in Duplex Mode. ※ Executing system settings reset does not clear the password settings for stored documents or change the setting for Auto-off (energy saver 2) back to default. ※ Printed sheets are fed out to shift tray 2 of the finisher in punch/staple mode. ※ Centering problem when printing onto 12" x 18" paper. 	March, 2002
G5706688A <<A>>	1.08	0E02	<ul style="list-style-type: none"> • The following have been fixed: <ul style="list-style-type: none"> ※ When scanning originals in color mode, the machine freezes if the HDD is in the near-full condition and the scanned data is saved in JPEG format. <p>"8 1/4 x 14 SEF" is displayed when the machine detects 8 1/2 x 14 SEF.</p>	May, 2002

Reissued: 30-Jul-04

Model: Model-J CF	Date: 15-Mar-02	No.: RG570003j
-------------------	-----------------	----------------

P/N	System Version	Check Sum	Contents of Modification	Cut-in Month								
G5706688C <<C>>	1.09	A548	<ul style="list-style-type: none"> Files stored on the Document Server using fax or scan mode can be moved or copied using DeskTopBinder. 	August, 2002								
G5706688D <<D>>	1.10	24E9	<ul style="list-style-type: none"> New SP mode added: SP3-922 (see engine main firmware version B1.21 for details). 	September, 2002								
G5706688E <<I>>	1.11	9A7C	<ul style="list-style-type: none"> The following has been fixed. <ul style="list-style-type: none"> ※ When prints are made with Meter Click, B&W pages following color pages in ACS mode are also counted up as color developments. Specifically, the B&W development counter should only increment by 1 for a B&W page following a color page in the same ACS print job, however in addition to this, the color development counter is also incremented by 3. 	March, 2004								
G5706688F <<J>>	1.12	38E9	<ul style="list-style-type: none"> SP2-399-001 (Trans_Cur_Chg) has been added. To activate this function, it is necessary to use Engine firmware version 1.28 or newer. <table border="1" style="margin-left: 20px;"> <tr> <td style="text-align: center;">399</td> <td colspan="3" style="text-align: center;">[Trans_Cur_Chg] Transfer current change</td> </tr> <tr> <td style="text-align: center;">1</td> <td style="text-align: center;">Trans_Cur_Chg</td> <td style="text-align: center;">*</td> <td>Perform the following to allow the machine to detect the new unit (Transfer Roller Type). [0 or 1/ 0 / -] 0: Transfer Brush Type, 1: Transfer Roller Type</td> </tr> </table> <p>Note: The transfer unit has been modified from a transfer brush to a transfer roller system in order to further improve the accuracy of color line positioning. In accordance with this change, this SP mode setting should be done at transfer unit (Transfer roller type) installation.</p>	399	[Trans_Cur_Chg] Transfer current change			1	Trans_Cur_Chg	*	Perform the following to allow the machine to detect the new unit (Transfer Roller Type). [0 or 1/ 0 / -] 0: Transfer Brush Type, 1: Transfer Roller Type	July, 2004
399	[Trans_Cur_Chg] Transfer current change											
1	Trans_Cur_Chg	*	Perform the following to allow the machine to detect the new unit (Transfer Roller Type). [0 or 1/ 0 / -] 0: Transfer Brush Type, 1: Transfer Roller Type									

1. Printer Application Firmware

P/N	Version	Check Sum	Contents of Modification	Cut-in Month
G5705391B	1.02	-	Firmware installed from the first mass production run.	December, 2001
G5705391C	1.05	-	<ul style="list-style-type: none"> The following has been fixed: Paper is not punched at the designated position in Series Print mode (see RTB Rgene010 for details on Series Print mode). 	January, 2002
G5705391D	1.06	-	<ul style="list-style-type: none"> The following has been fixed: While downloading PS fonts to a machine with the HDD option installed, the correct PS serial number cannot be output. 	February, 2002

Reissued: 30-Jul-04

Model: Model-J CF	Date: 15-Mar-02	No.: RG570003j
-------------------	-----------------	----------------

P/N	Version	Check Sum	Contents of Modification	Cut-in Month
G5705391E	1.07	2EB8	<ul style="list-style-type: none"> • Euro fonts PC858, ISO8859-15, L9, PS Math and MC Text are now supported. • PS performance improvement. • The followings have been fixed: <ul style="list-style-type: none"> ※ When the undefined command, "<ESC>&k#w", is received, it appears on the output as a character string [e.g. as "<ESC>&k6w"]. ※ If Job Reset is selected while the first page of a multiple-page document is being processed, the panel continues to display "Printing". ※ AutoContinue timer bug. 	March, 2002
G5705391F <<A>>	1.08	972E	<ul style="list-style-type: none"> • The following have been fixed: <ul style="list-style-type: none"> ※ The panel indicates an Offline status when recovering from Energy Saver mode. ※ The software allows a password of less than 4 characters to be set for Locked Printing. ※ The panel freezes when the following is performed: <ol style="list-style-type: none"> 1. Several tabs are accessed in User Tools – Printer Features. 1. Bypass Paper Size is selected in the Paper Input tab and the custom paper size is set. ※ The panel freezes when a punch error occurs in Series Print mode. ※ Certain characters do not print (GFPR #RC02010008). • Change in Specification: <ul style="list-style-type: none"> ※ The icon for Letterhead with duplex on the initial display for Copier mode has been changed to match that of the other paper icons. ※ PCL <ul style="list-style-type: none"> - Modified so that all characters in symbol sets MS Text and Windows Baltic (19L) print out the same as with HP. - When the HDD option is not installed, the PCL HDD Directory List and Font Source sections will not appear on the PCL Configuration Page. ※ PS <ul style="list-style-type: none"> - The black dither will not be used with the DeviceGray command. 	May, 2002
G5705391G <>	1.08.5	FD19	<ul style="list-style-type: none"> • Counter values displayed on the configuration sheet for "Pages Printed" have been changed as follows: <ul style="list-style-type: none"> ※ SP7-003-01 [-20 / -21] → SP7-003-01 [-30 / -23]. • The following have been fixed: <ul style="list-style-type: none"> ※ PCL <ul style="list-style-type: none"> - Modified the dither size for when the UDFP command is used (GFPR# RE02030021) ※ PS <ul style="list-style-type: none"> - The margin for Custom size has been changed from 12 to 11 points to expand the 	June, 2002

Reissued: 30-Jul-04

Model: Model-J CF	Date: 15-Mar-02	No.: RG570003j
-------------------	-----------------	----------------

P/N	Version	Check Sum	Contents of Modification	Cut-in Month
			maximum printing area. - Modified the dither setting for when the DeviceGray command is used. • Change in Specification: Supports the Status Readback function of the PCL5e.	
G5705391H <>	1.09	9809	• The following has been fixed: ※ The printing speed of a PS job slows down after a PS3 job is reset.	July, 2002
G5705391J <<D>>	1.11	C775	• Counter values displayed on the configuration sheet for "Pages Printed" have been changed as follows for when Meter Click Charge mode is on and development count method has been selected: SP7-003-01 [-30 / -23] → SP7-003-01 [-20 / -21] • It does not go Online when the time setting is changed greatly on the operation panel. • When paper size error occurs using PCL printing, the printer error message of SNM for Client is not displayed on the PC. • The following have been fixed: ※ Toner near end alert of the replaced toner doesn't disappear even if one of the toner cartridges is replaced when more than one toner are toner near end condition. ※ PCL - Euro font does not print correctly. - Line Spacing Command, "Esc&l#D", causes incorrect output.(GFPR# RC02050002) - Slow Printing from AutoCAD.(GFPR# RC02070001) ※ PS - Euro symbol is not printed.(GFPR# RC02040005) Please refer to RTB #RGENE011 which will be issued soon, for the procedure of how to fix this issue. - PS print file is printed as text.(GFPR# RE02040013)	October, 2002

Reissued: 30-Jul-04

Model: Model-J CF	Date: 15-Mar-02	No.: RG570003j
-------------------	-----------------	----------------

P/N	Version	Check Sum	Contents of Modification	Cut-in Month
G5705391K <<E>>	1.12	EE00	<ul style="list-style-type: none"> • The following have been fixed: <ul style="list-style-type: none"> ※ After using User Tool on operation panel, PCL print jobs may keep showing "Printing..." on operation panel. ※ Form Lines value (under PCL Menu) change after reboot the Machine. (GFPR# RA02090003) ※ PCL <ul style="list-style-type: none"> - Response to PJL INFO CONFIG command does not include serial number. - The print may stop during the processing of the file when using "INFICO". (GFPR# RE02090012) - The work area of RAM is reduced whenever fonts that have been downloaded to HDD are used. ※ PS <ul style="list-style-type: none"> - 16bit color blend data does not print correctly. (TechMail#RE0200414) - Slow Printing from AutoCAD. (GFPR# RC02070001) - Printing may not work correctly when a protocol other than EtherTalk is used on Macintosh 8.x/9.x.(TechMail#UK020107) - The printer controller locks-up when printing from Unix Acrobat. - Lines may be printed on the blank of page. - The error log is not described in Configuration page when the punch error occurred. - When data is sent that outputs 3 hole punch to the European model (which supports 2&4 hole punch), output has 2 hole punch. (Now output has no punch). - Printing on envelope may not work correctly. ※ PJL <ul style="list-style-type: none"> - Response to PJL INFO CONFIG command does not include serial number. 	December, 2002

Reissued: 30-Jul-04

Model: Model-J CF	Date: 15-Mar-02	No.: RG570003j
-------------------	-----------------	----------------

P/N	Version	Check Sum	Contents of Modification	Cut-in Month
G5705391L <<G>>	1.13	-	<ul style="list-style-type: none"> • The following have been fixed: <ul style="list-style-type: none"> ※ PCL <ul style="list-style-type: none"> - The following problems with the CAD print file were fixed. <ol style="list-style-type: none"> 1. Modified the available pen number from 8 to 256 when BitSw #3-3 is ON. (GFPR# RE02030003) 2) The "null" character is ignored when it is included in HP/GL2 data. (GFPR# RE02050016) 3) The status flag for the bold selection command is refreshed when the bold selection command in HP/GL2 data is selected. (GFPR# RE02050016) - Supports mixed binding orientations with duplex jobs using cover sheets. (GFPR# RC02080003) - When using the "PageLength" command, duplex print does not work. (GFPR#RC02120014) -The downloaded PCL Barcode fonts are not printed correctly on the PCL font list. (GFPR#RC03010004) - The Barcodes are printed with shift. (GFPR#RE03010016) - Selecting HDD font may reduce available memory. - Supported SAP Barcode & OCR printing. ※ PS <ul style="list-style-type: none"> - PS error occurs when unknown media type is specified. (GFPR# RE03010003) - The default setting of mainframe System/Resolution is "1200 x 600dpi". 	-
G5705391M <<G>>	1.14	1BD2	<ul style="list-style-type: none"> • Change in specification <ul style="list-style-type: none"> - Changing Adobe PostScript 3 Logo in PS config page to red. 	April, 2003

1. Scanner Application Firmware

P/N	Version	Check Sum	Contents of Modification	Cut-in Month
G5705386A	1.00	-	Firmware installed from the first mass production run.	December, 2001
G5705386B	1.03	DCB6	<ul style="list-style-type: none"> • The following has been fixed: <ul style="list-style-type: none"> ※ PP mode software bug 	January, 2002
G5705386C <<G>>	1.06	F1BB	<ul style="list-style-type: none"> • The following bug is fixed. <ul style="list-style-type: none"> ※ SC990 will occur when scanning from the TWAIN driver and the defined document size on 	July, 2002

Reissued: 30-Jul-04

Model: Model-J CF	Date: 15-Mar-02	No.: RG570003j
-------------------	-----------------	----------------

P/N	Version	Check Sum	Contents of Modification	Cut-in Month
			<p>TWAIN is larger than the paper size that the ADF detected. An error message, "The length of the original exceeds limit." Is displayed in the TWAIN driver U/I. e.g. Document size on TWAIN Driver: A3 Portrait (A3 SEF), ADF detected paper size: A4 SEF</p> <ul style="list-style-type: none"> ※ When printing a job while scanning from the TWAIN driver, the scanning process is interrupted. An error message, "Scanner memory is in use for other function. Check the scanner." Is displayed in the TWAIN driver U/I. ※ Scanner terminates connection and SC997 is displayed when the data load on the MFP is high, such as at the full condition for recovery delivery jobs or delivery requests, continuous memory transmissions, memory/substitute receptions of over 1000 pages, or transfer station for over 1000 pages. 	

4. Fax Application Firmware

P/N	System Version	Check Sum	Contents of Modification	Cut-in Month
G5705387A	1.00	13D4	Firmware installed from the first mass production run.	December, 2001

5. Scanner IPU Firmware

P/N	Version	Check Sum	Contents of Modification	Cut-in Month
G5705350H	1.10	-	Firmware installed from the first mass production run.	December, 2001
G5705350J	1.12	507A	<ul style="list-style-type: none"> • Scanner software modified to effectively minimize variations in SBU board scanner controller output. • The following has been fixed: <ul style="list-style-type: none"> ※ A color misalignment appears when the full-page cover sheet and combine functions are selected. 	February, 2002

Reissued: 30-Jul-04

Model: Model-J CF	Date: 15-Mar-02	No.: RG570003j
-------------------	-----------------	----------------

P/N	Version	Check Sum	Contents of Modification	Cut-in Month
G5705350K <<F>>	1.18	EFE2	<ul style="list-style-type: none"> Firmware modified for use with the next model. 	December, 2002
G5705350L <<F>>	1.20	A856	<ul style="list-style-type: none"> The following has been fixed: <ul style="list-style-type: none"> * Shading correction error with ADF copies sometimes causes paleness or horizontal black or white bands. 	January, 2003
G5705350M <<H>>	1.21	AAA2	The filter coefficient for text/photo separation has been changed in text mode.	March, 2003
G5705350N <<I>>	1.22	A85E	The image quality in text/photo mode has been improved.	March, 2004

6. LCDC Firmware

[For NA/Asia version]

P/N	Version	Check Sum	Contents of Modification	Cut-in Month
G5705426	2.10	2DFD	Firmware installed from the first mass production run.	December, 2001
G5705426A <<A>>	2.12	920A	<ul style="list-style-type: none"> The following has been fixed: <ul style="list-style-type: none"> ※ Characters preceding a backslash appear as a “¥” on the User Program SMC report. 	May, 2002

[For EU version]

P/N	Version	Check Sum	Contents of Modification	Cut-in Month
G5705427	2.10	D529	Firmware installed from the first mass production run.	December, 2001
G5705427A <<A>>	2.12	878D	<ul style="list-style-type: none"> The following have been fixed: <ul style="list-style-type: none"> ※ The key name for Sub TX Mode is displayed as “Sub RX Mode” on the LCD if Spanish is selected. ※ Characters preceding a backslash appear as a “¥” on the User Program SMC report. 	May, 2002